

Anti-CACNA1C Antibody

Catalog Number: A00976-1

About CACNA1C

4E-BP1 encodes one member of a family of translation repressor proteins. The protein directly interacts with eukaryotic translation initiation factor 4E (eIF4E), which is a limiting component of the multisubunit complex that recruits 40S ribosomal subunits to the 5' end of mRNAs. Interaction of this protein with eIF4E inhibits complex assembly and represses translation. This protein is phosphorylated in response to various signals including UV irradiation and insulin signaling, resulting in its dissociation from eIF4E and activation of mRNA translation.

Gingras AC, et al. (1998) Genes Dev 12(4): 502-513.

Brugarolas J, et al. (2004) Genes Dev 18(23): 2893-2904.

Kumar V, et al. (2000) EMBO J 19(5): 1087-1097.

Moody CA, et al. (2005) J Virol 79(9): 5499-5506.

Burnett PE, et al. (1998) Proc Natl Acad Sci U S A 95(4): 1432-1437.

Overview

Product Name	Anti-CACNA1C Antibody
Reactive Species	Human, Mouse, Rat
Description	Boster Bio Anti-CACNA1C Antibody catalog # A00976-1. Tested in WB applications. This antibody reacts with Human,Mouse,Rat.
Application	WB
Clonality	Polyclonal
Formulation	Rabbit IgG, 1mg/ml in PBS with 0.02% sodium azide, 50% glycerol, pH7.2
Storage Instructions	Store at -20°C for one year. For short term storage and frequent use, store at 4°C for up to one month. Avoid repeated freeze-thaw cycles.
Host	Rabbit
Uniprot ID	Q13936

Technical Details

Immunogen	Synthesized peptide derived from human LRP6 protein.
Predicted Reactive Species	Boar, Bovine, Canine, Golden Hamster
Cross Reactivity	No cross reactivity with other proteins.
Isotype	IgG

Form	Liquid
Concentration	1 mg/ml
Purification	The antibody was affinity-purified from rabbit antiserum by affinity-chromatography using epitope-specific immunogen and the purity is > 95% (by SDS-PAGE).
Suggested Dilutions	<p>Dilute the sample so that the expected range of concentrations fall within the detection range of this kit.</p> <p>If the expected range of concentration is unknown, a pilot test should be conducted to decide the optimal dilution ratio for your samples.</p> <p>Some PubMed article(s) citing the expression level of this target are as follows:</p> <p>Boster Bio's internal QC testing used:</p> <p>WB: 1:500-1:1000</p>

Anti-CACNA1C Antibody (A00976-1) Images

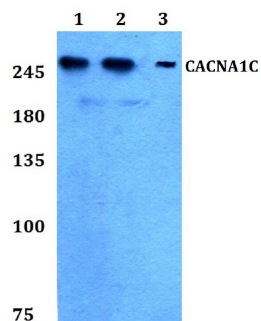


Figure 1. Western blotting validation for Anti-CACNA1C Antibody A00976-1

Western blot (WB) analysis of CACNA1C polyclonal antibody at 1:500 dilution

Lane1:HEK293T whole cell lysate

Lane2:Raw264.7 whole cell lysate

Lane3:H9C2 whole cell lysate

Electrophoresis was performed on a SDS-PAGE gel. To determine SDS-PAGE gel concentration

Submit a product review to Biocompare.com

Submit a review of this product to Biocompare.com to receive a \$20 Amazon.com giftcard! Your reviews help your fellow scientists make the right decisions. Thank you for your contribution.



Anti-CACNA1C Antibody