

Anti-Protein cereblon CRBN Antibody

Catalog Number: A00983

About CRBN

CRBN, a member of the Lon protease protein family, plays a role in brain development (1). It is a component of the DCX (DDB1-CUL4-X-box) E3 protein ligase complex, a complex that mediates the ubiquitination and subsequent proteasomal degradation of target proteins and is required for limb outgrowth and expression of the fibroblast growth factor FGF8 (2). CRBN is thought to regulate the assembly and neuronal surface expression of large-conductance calcium-activated potassium channels in brain regions involved in memory and learning via its interaction with KCNT1. It is widely expressed and highly expressed in brain (3,4).

Overview

Product Name	Anti-Protein cereblon CRBN Antibody
Reactive Species	Human, Mouse, Rat
Description	Boster Bio Anti-Protein cereblon CRBN Antibody (Catalog # A00983). Tested in ELISA, WB, IHC-P, IF applications. This antibody reacts with Human, Mouse, Rat.
Application	ELISA, IF, IHC-P, WB
Clonality	Polyclonal
Formulation	CRBN antibody is supplied in PBS containing 0.02% sodium azide.
Storage Instructions	CRBN antibody can be stored at 4°C up to one year. Antibodies should not be exposed to prolonged high temperatures.
Host	Rabbit
Uniprot ID	Q96SW2

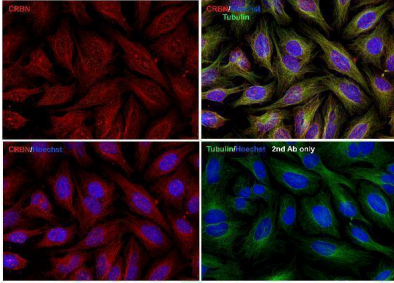
Technical Details

Immunogen	CRBN antibody was raised against a 16 amino acid peptide near the carboxy terminus of human CRBN. The immunogen is located within the last 50 amino acids of CRBN.
Predicted Reactive Species	Bovine
Cross Reactivity	CRBN antibody is human, mouse and rat reactive. At least two isoforms of CRBN are known to exist; this antibody will detect both isoforms.
Isotype	IgG
Form	Liquid
Concentration	1 mg/mL
Purification	CRBN antibody is affinity chromatography purified via peptide column.

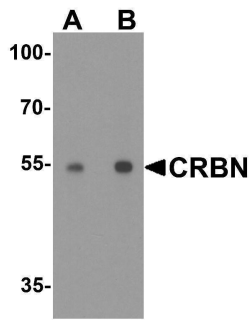
Suggested Dilutions

CRBN antibody can be used for detection of CRBN by Western blot at 1 - 2 ug/mL. Antibody can also be used for immunohistochemistry starting at 5 ug/mL. For immunofluorescence start at 20 ug/mL. Antibody validated: Western Blot in human samples; Immunohistochemistry in rat samples and Immunofluorescence in rat samples. All other applications and species not yet tested. Optimal dilutions for each application should be determined by the researcher.

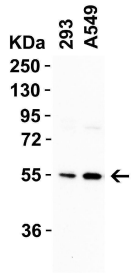
Anti-Protein cereblon CRBN Antibody (A00983) Images



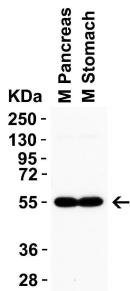
Immunofluorescence Validation of CRBN in HeLa Cells
Immunofluorescent analysis of methanol-fixed HeLa cells labeling CRBN with A00983 at 10 ug/mL, followed by goat anti-rabbit IgG secondary antibody at 1/1000 dilution (red) and Hoechst staining (blue). Alpha tubulin was stained with anti-alpha tubulin antibody following by goat anti-mouse IgG secondary antibody (green). Images were captured with confocal microscopy.



WB Validation in Human Testis Loading: 15 ug of human testis lysate
Antibodies: CRBN A00983, 1 h incubation at RT in 5% NFDm/TBST. Secondary: Goat anti-rabbit IgG HRP conjugate at 1:10000 dilution. Lane A: 0.5 ug/mL Lane B: 1 ug/mL

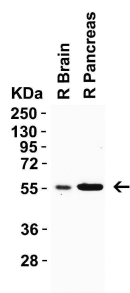


WB Validation in Human Cells Loading: 15 ug of cell lysate
Antibodies: CRBN A00983, 1 ug/mL, 1 h incubation at RT in 5% NFDm/TBST. Secondary: Goat anti-rabbit IgG HRP conjugate at 1:10000 dilution.



WB Validation in Mouse Tissues Loading: 15 ug of mouse tissue lysate
Antibodies: CRBN A00983, 0.5 ug/mL, 1 h incubation at RT in 5% NFDm/TBST. Secondary: Goat anti-rabbit IgG HRP conjugate at 1:10000 dilution.

WB Validation in Rat Tissues Loading: 15 ug of rat tissue lysate
Antibodies: CRBN A00983, 0.5 ug/mL, 1 h incubation at RT in 5% NFDm/TBST. Secondary: Goat anti-rabbit IgG HRP conjugate at 1:10000 dilution.



Submit a product review to Biocompare.com

Submit a review of this product to Biocompare.com to receive a \$20 Amazon.com giftcard! Your reviews help your fellow scientists make the right decisions. Thank you for your contribution.



Anti-Protein cereblon CRBN Antibody

For Research Use Only. Not for use in diagnostic procedures.