

## Anti-MBL-C MBL2 Antibody

Catalog Number: A01000-1

### Overview

Product Name	Anti-MBL-C MBL2 Antibody
Reactive Species	Human, Mouse
Description	Boster Bio Anti-MBL-C MBL2 Antibody catalog # A01000-1. Tested in WB, IHC applications. This antibody reacts with Human, Mouse.
Application	IHC, WB
Clonality	Polyclonal
Formulation	PBS, pH 7.4, containing 0.02% sodium azide as Preservative and 50% Glycerol.
Storage Instructions	Store at -20°C for one year. For short term storage and frequent use, store at 4°C for up to one month. Avoid repeated freeze-thaw cycles.
Host	Rabbit
Uniprot ID	P11226

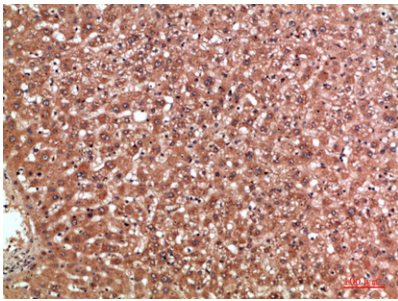
### Technical Details

Immunogen	Synthetic peptide from human protein at AA range: 21-70
Isotype	IgG
Form	Liquid
Concentration	1 mg/ml
Purification	Immunogen affinity purified
Suggested Dilutions	WB 1:500-2000 IHC 1:50-300

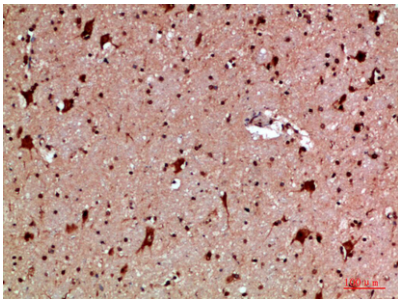
## Anti-MBL-C MBL2 Antibody (A01000-1) Images



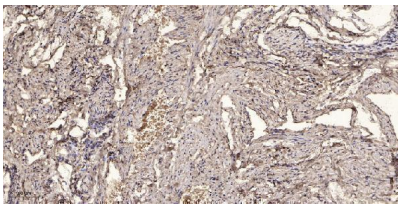
Western Blot analysis of mouse-kidney cells using Antibody diluted at 500. Secondary antibody was diluted at 1:20000



Immunohistochemical analysis of paraffin-embedded human liver, antibody was diluted at 1:200



Immunohistochemical analysis of paraffin-embedded human brain, antibody was diluted at 1:200



Immunohistochemical analysis of paraffin-embedded human oophoroma. 1, Antibody was diluted at 1:200 (4° overnight). 2, Tris-EDTA, pH9.0 was used for antigen retrieval. 3, Secondary antibody was diluted at 1:200 (room temperature, 45min).

### Submit a product review to [Biocompare.com](https://www.biocompare.com)

Submit a review of this product to [Biocompare.com](https://www.biocompare.com) to receive a \$20 Amazon.com giftcard! Your reviews help your fellow scientists make the right decisions. Thank you for your contribution.



Anti-MBL-C MBL2 Antibody

For Research Use Only. Not for use in diagnostic procedures.