

Anti-MBL2 Antibody Picoband™

Catalog Number: A01000-2

About Mbl2

MBL2, also called mannanose-binding lectin (protein C) 2, soluble or Mannose-binding lectin (MBL) is a lectin that is instrumental in innate immunity. MBL2 is mapped to chromosome 10q11.2-q21. It belongs to the class of collectins in the C-type lectin superfamily, whose function appears to be pattern recognition in the first line of defense in the pre-immune host. MBL2 recognizes carbohydrate patterns, found on the surface of a large number of pathogenic micro-organisms, including bacteria, viruses, protozoa and fungi. Binding MBL2 to a micro-organism results in activation of the lectin pathway of the complement system. Another important function of MBL2 is that this molecule binds senescent and apoptotic cells and enhances engulfment of whole, intact apoptotic cells, as well as cell debris by phagocytes.

Overview

Product Name	Anti-MBL2 Antibody Picoband™
Reactive Species	Mouse, Rat
Description	Boster Bio Anti-MBL2 Antibody Picoband™ catalog # A01000-2. Tested in ELISA, IHC, WB applications. This antibody reacts with Mouse, Rat.
Application	ELISA, IHC, WB
Clonality	Polyclonal
Formulation	Each vial contains 4mg Trehalose, 0.9mg NaCl, 0.2mg Na2HPO4, 0.05mg NaN3.
Storage Instructions	Store at -20°C for one year from date of receipt. After reconstitution, at 4°C for one month. It can also be aliquotted and stored frozen at -20°C for six months. Avoid repeated freeze-thaw cycles.
Host	Rabbit
Uniprot ID	Mbl2: P08661

Technical Details

Immunogen	E. coli-derived rat MBL2 recombinant protein (Position: E19-D244).
Predicted Reactive Species	Human
Recommended Detection Systems	Boster recommends Enhanced Chemiluminescent Kit with anti-Rabbit IgG (EK1002) for Western blot, and HRP Conjugated anti-Rabbit IgG Super Vision Assay Kit (SV0002-1) for IHC(P).
Cross Reactivity	No cross-reactivity with other proteins.
Isotype	Rabbit IgG
Form	Lyophilized

Concentration	Adding 0.2 ml of distilled water will yield a concentration of 500 ug/ml.
Purification	Immunogen affinity purified.
Suggested Dilutions	<p>Dilute the sample so that the expected range of concentrations fall within the detection range of this kit.</p> <p>If the expected range of concentration is unknown, a pilot test should be conducted to decide the optimal dilution ratio for your samples.</p> <p>Some PubMed article(s) citing the expression level of this target are as follows:</p> <p>Boster Bio's internal QC testing used:</p> <p>Western blot, 0.1-0.5ug/ml</p> <p>Immunohistochemistry (Paraffin-embedded Section), 0.5-1ug/ml</p> <p>Direct ELISA, 0.1-0.5ug/ml</p>

Anti-MBL2 Antibody Picoband™ (A01000-2) Images

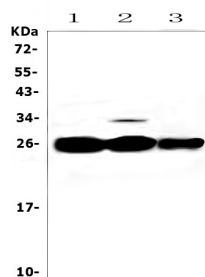


Figure 1. Western blot analysis of MBL2 using anti-MBL2 antibody (A01000-2).

Electrophoresis was performed on a 5-20% SDS-PAGE gel at 70V (Stacking gel) / 90V (Resolving gel) for 2-3 hours. The sample well of each lane was loaded with 50ug of sample under reducing conditions.

Lane 1: rat liver tissue lysates,

Lane 2: mouse liver tissue lysates,

Lane 3: mouse HEPA1-6 whole cell lysates.

After Electrophoresis, proteins were transferred to a Nitrocellulose membrane at 150mA for 50-90 minutes.

Blocked the membrane with 5% Non-fat Milk/ TBS for 1.5 hour at RT. The membrane was incubated with rabbit anti-MBL2 antigen affinity purified polyclonal antibody (Catalog # A01000-2) at 0.5 ug/mL overnight at 4 then washed with TBS-0.1%Tween 3 times with 5 minutes each and probed with a goat anti-rabbit IgG-HRP secondary antibody at a dilution of 1:10000 for 1.5 hour at RT. The signal is developed using an Enhanced Chemiluminescent detection (ECL) kit (Catalog # EK1002) with Tanon 5200 system. A specific band was detected for MBL2 at approximately 26KD. The expected band size for MBL2 is at 26KD.

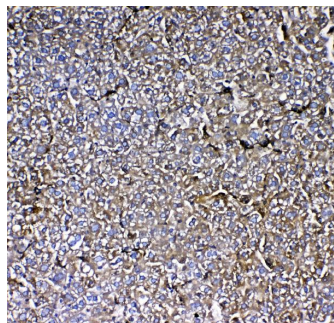


Figure 2. IHC analysis of MBL2 using anti-MBL2 antibody (A01000-2).

MBL2 was detected in paraffin-embedded section of mouse liver tissue. Heat mediated antigen retrieval was performed in citrate buffer (pH6, epitope retrieval solution) for 20 mins. The tissue section was blocked with 10% goat serum. The tissue section was then incubated with 1ug/ml rabbit anti-MBL2 Antibody (A01000-2) overnight at 4°C. Biotinylated goat anti-rabbit IgG was used as secondary antibody and incubated for 30 minutes at 37°C. The tissue section was developed using Streptavidin-Biotin-Complex (SABC)(Catalog # SA1022) with DAB as the chromogen.

Submit a product review to Biocompare.com

Submit a review of this product to Biocompare.com to receive a \$20 Amazon.com giftcard! Your reviews help your fellow scientists make the right decisions. Thank you for your contribution.



Anti-MBL2 Antibody™