

Anti-TRPM8 Antibody (Center)

Catalog Number: A01002

About TRPM8

Receptor-activated non-selective cation channel involved in detection of sensations such as coolness, by being activated by cold temperature below 25 degrees Celsius. Activated by icilin, eucalyptol, menthol, cold and modulation of intracellular pH. Involved in menthol sensation. Permeable for monovalent cations sodium, potassium, and cesium and divalent cation calcium. Temperature sensing is tightly linked to voltage-dependent gating. Activated upon depolarization, changes in temperature resulting in graded shifts of its voltage-dependent activation curves. The chemical agonists menthol functions as a gating modifier, shifting activation curves towards physiological membrane potentials. Temperature sensitivity arises from a tenfold difference in the activation energies associated with voltage-dependent opening and closing.

Overview

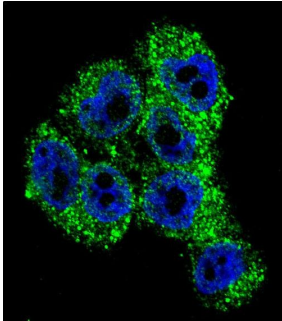
Product Name	Anti-TRPM8 Antibody (Center)
Reactive Species	Human
Description	Boster Bio Anti-TRPM8 Antibody (Center) (Catalog # A01002). Tested in WB, IF, IHC-P application(s). This antibody reacts with Human.
Application	IF, IHC-P, WB
Clonality	Polyclonal
Formulation	Purified polyclonal antibody supplied in PBS with 0.09% (W/V) sodium azide.
Storage Instructions	Maintain refrigerated at 2-8°C for up to 2 weeks. For long-term storage, store at -20°C in small aliquots to prevent freeze-thaw cycles.
Host	Rabbit
Uniprot ID	Q7Z2W7

Technical Details

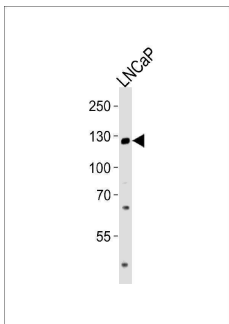
Immunogen	This TRPM8 antibody is generated from rabbits immunized with a KLH conjugated synthetic peptide between 263-292 amino acids from the Central region of human TRPM8.
Predicted Reactive Species	Mouse, Rat
Recommended Detection Systems	Boster recommends Enhanced Chemiluminescent Kit with anti-Rabbit IgG (EK1002) for Western blot, and HRP Conjugated anti-Rabbit IgG Super Vision Assay Kit (SV0002-1) for IHC(P).
Cross Reactivity	No cross reactivity with other proteins.
Isotype	Rabbit IgG
Form	Liquid

Purification	This antibody is prepared by Saturated Ammonium Sulfate (SAS) precipitation followed by dialysis against PBS.
Suggested Dilutions	IF: 1:10-1:50 WB: 1:1000 IHC-P: 1:50-1:100

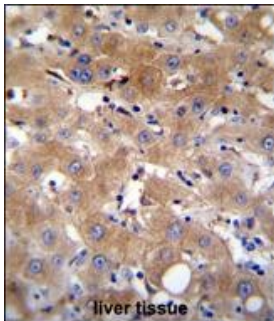
Anti-TRPM8 Antibody (Center) (A01002) Images



Confocal immunofluorescent analysis of TRPM8 Antibody (Center) with A375 cell followed by Alexa Fluor 488-conjugated goat anti-rabbit IgG (green). DAPI was used to stain the cell nuclear (blue).



Western blot analysis of lysate from LNCaP cell line, using TRPM8 Antibody (Center) (Cat. #A01002). A01002 was diluted at 1:1000 at each lane. A goat anti-rabbit IgG H&L (HRP) at 1:5000 dilution was used as the secondary antibody. Lysate at 35ug per lane.



TRPM8 Antibody (Center) (Cat. #A01002) immunohistochemistry analysis in formalin fixed and paraffin embedded human liver tissue followed by peroxidase conjugation of the secondary antibody and DAB staining. This data demonstrates the use of TRPM8 Antibody (Center) for immunohistochemistry. Clinical relevance has not been evaluated.

Submit a product review to [Biocompare.com](https://www.biocompare.com)

Submit a review of this product to [Biocompare.com](https://www.biocompare.com) to receive a \$20 Amazon.com giftcard! Your reviews help your fellow scientists make the right decisions. Thank you for your contribution.



Anti-TRPM8 Antibody (Center)

For Research Use Only. Not for use in diagnostic procedures.