

Anti-Integrin beta 4/ITGB4 Antibody Picoband®

Catalog Number: A01015-2

About ITGB4

ITGB4 (Integrin, beta-4), also known as CD104 (Cluster of Differentiation 104), is a human gene. The gene encodes the integrin beta 4 subunits, a receptor for the laminins. This subunit tends to associate with alpha 6 subunits and is likely to play a pivotal role in the biology of invasive carcinoma. The ITGB4 gene is mapped on 17q25.1. Using expression profiling, Yang et al. found that ITGB4 was upregulated 6-fold by ZKSCAN3 in transfected human colon cancer cells compared with parental cells. They confirmed that ZKSCAN3 bound the promoter of ITGB4 in vitro and in vivo. ITGB4 knockdown by short hairpin RNA countered ZKSCAN3-augmented anchorage-independent colony formation in the colon cancer cell lines. The integrin beta-4 subunit is characterized by an unusually long cytoplasmic domain that harbors 4 fibronectin type III (FNIII) repeats, residing in 2 pairs separated by a connecting segment. Vidal et al. found compound heterozygosity for mutations in the ITGB4 gene in an infant with junctional epidermolysis bullosa associated with pyloric atresia.

Overview

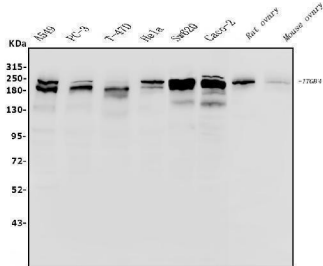
Product Name	Anti-Integrin beta 4/ITGB4 Antibody Picoband®
Reactive Species	Human, Mouse, Rat
Description	Boster Bio Anti-Integrin beta 4/ITGB4 Antibody Picoband® catalog # A01015-2. Tested in ELISA, Flow Cytometry, IF, IHC, WB applications. This antibody reacts with Human, Mouse, Rat. The brand Picoband indicates this is a premium antibody that guarantees superior quality, high affinity, and strong signals with minimal background in Western blot applications. Only our best-performing antibodies are designated as Picoband, ensuring unmatched performance.
Application	ELISA, Flow Cytometry, IF, IHC, WB
Clonality	Polyclonal
Formulation	Each vial contains 4mg Trehalose, 0.9mg NaCl, 0.2mg Na2HPO4, 0.01mg NaN3.
Storage Instructions	Store at -20°C for one year from date of receipt. After reconstitution, at 4°C for one month. It can also be aliquotted and stored frozen at -20°C for six months. Avoid repeated freeze-thaw cycles.
Host	Rabbit
Uniprot ID	P16144

Technical Details

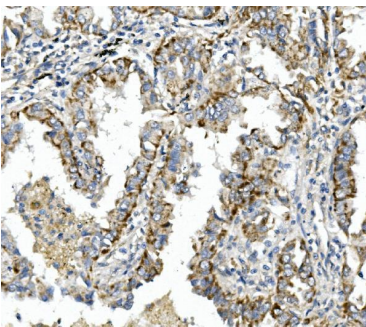
Immunogen	E.coli-derived human Integrin beta 4/ITGB4 recombinant protein (Position: R29-K431).
Recommended Detection Systems	Boster recommends Enhanced Chemiluminescent Kit with anti-Rabbit IgG (EK1002) for Western blot, and HRP Conjugated anti-Rabbit IgG Super Vision Assay Kit (SV0002-1) for IHC(P).
Cross Reactivity	No cross-reactivity with other proteins.
Isotype	Rabbit IgG

Form	Lyophilized
Concentration	Adding 0.2 ml of distilled water will yield a concentration of 500 ug/ml.
Purification	Immunogen affinity purified.
Suggested Dilutions	Western blot, 0.1-0.25ug/ml, Human, Mouse, Rat Immunohistochemistry (Paraffin-embedded Section), 0.5-1ug/ml, Human Immunofluorescence, 4ug/ml, Human Flow Cytometry (Fixed), 1-3ug/1x10 ⁶ cells, Human ELISA, 0.1-0.5ug/ml, -

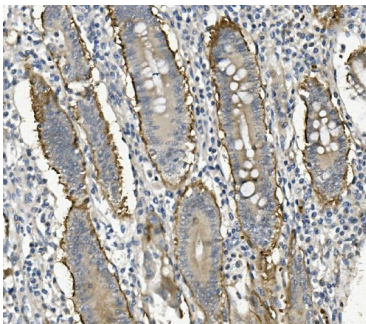
Anti-Integrin beta 4/ITGB4 Antibody Picoband® (A01015-2) Images



Western blot analysis of Integrin beta 4/ITGB4 using anti-Integrin beta 4/ITGB4 antibody (A01015-2). Electrophoresis was performed on a 5-20% SDS-PAGE gel at 70V (Stacking gel) / 90V (Resolving gel) for 2-3 hours. The sample well of each lane was loaded with 50ug of sample under reducing conditions. Lane 1: human A549 whole cell lysates, Lane 2: human PC-3 whole cell lysates, Lane 3: human T-47D whole cell lysates, Lane 4: human Hela whole cell lysates, Lane 5: human SW620 whole cell lysates, Lane 6: human CACO-2 whole cell lysates, Lane 7: rat ovary tissue lysates, Lane 8: mouse ovary tissue lysates. After Electrophoresis, proteins were transferred to a Nitrocellulose membrane at 150mA for 50-90 minutes. Blocked the membrane with 5% Non-fat Milk/TBS for 1.5 hour at RT. The membrane was incubated with rabbit anti-Integrin beta 4/ITGB4 antigen affinity purified polyclonal antibody (Catalog # A01015-2) at 0.25 ug/mL overnight at 4°C, then washed with TBS-0.1%Tween 3 times with 5 minutes each and probed with a goat anti-rabbit IgG-HRP secondary antibody at a dilution of 1:5000 for 1.5 hour at RT. The signal is developed using an Enhanced Chemiluminescent detection (ECL) kit (Catalog # EK1002) with Tanon 5200 system. A specific band was detected for Integrin beta 4/ITGB4 at approximately 210KD. The expected band size for Integrin beta 4/ITGB4 is at 202KD.

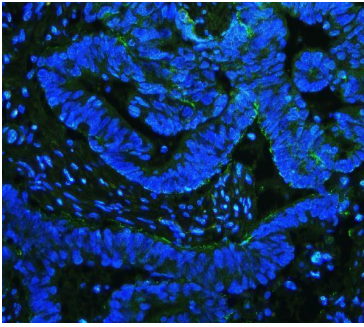


IHC analysis of Integrin beta 4/ITGB4 using anti-Integrin beta 4/ITGB4 antibody (A01015-2). Integrin beta 4/ITGB4 was detected in paraffin-embedded section of human lung cancer tissue. Heat mediated antigen retrieval was performed in EDTA buffer (pH8.0, epitope retrieval solution). The tissue section was blocked with 10% goat serum. The tissue section was then incubated with 1ug/ml rabbit anti-Integrin beta 4/ITGB4 Antibody (A01015-2) overnight at 4°C. Biotinylated goat anti-rabbit IgG was used as secondary antibody and incubated for 30 minutes at 37°C. The tissue section was developed using Streptavidin-Biotin-Complex (SABC) (Catalog # SA1022) with DAB as the chromogen.

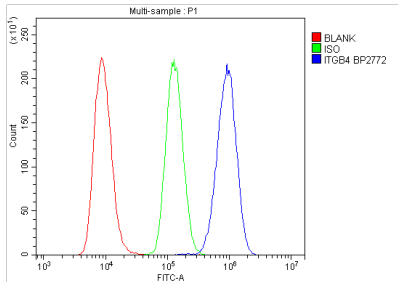


IHC analysis of Integrin beta 4/ITGB4 using anti-Integrin beta 4/ITGB4 antibody (A01015-2). Integrin beta 4/ITGB4 was detected in paraffin-embedded section of human rectal cancer tissue. Heat mediated antigen retrieval was performed in EDTA buffer (pH8.0, epitope retrieval solution). The tissue section was blocked with 10% goat serum. The tissue section was then incubated with 1ug/ml rabbit anti-Integrin beta 4/ITGB4 Antibody (A01015-2) overnight at 4°C. Biotinylated goat anti-rabbit IgG was used as secondary antibody and incubated for 30 minutes at 37°C. The tissue section was developed using Streptavidin-Biotin-Complex (SABC) (Catalog # SA1022) with DAB as the chromogen.

IF analysis of Integrin beta 4/ITGB4 using anti-Integrin beta



4/ITGB4 antibody (A01015-2). Integrin beta 4/ITGB4 was detected in paraffin-embedded section of human intestinal cancer tissue. Heat mediated antigen retrieval was performed in EDTA buffer (pH8.0, epitope retrieval solution). The tissue section was blocked with 10% goat serum. The tissue section was then incubated with 4ug/mL rabbit anti-Integrin beta 4/ITGB4 Antibody (A01015-2) overnight at 4°C. DyLight®488 Conjugated Goat Anti-Rabbit IgG (BA1127) was used as secondary antibody at 1:100 dilution and incubated for 30 minutes at 37°C. The section was counterstained with DAPI. Visualize using a fluorescence microscope and filter sets appropriate for the label used.



Flow Cytometry analysis of Raji cells using anti-Integrin beta 4/ITGB4 antibody (A01015-2). Overlay histogram showing Raji cells stained with A01015-2 (Blue line). The cells were fixed with 4% paraformaldehyde and blocked with 10% normal goat serum. And then incubated with rabbit anti-Integrin beta 4/ITGB4 Antibody (A01015-2, 1ug/1x10⁶ cells) for 30 min at 20°C. DyLight®488 conjugated goat anti-rabbit IgG (BA1127, 5-10ug/1x10⁶ cells) was used as secondary antibody for 30 minutes at 20°C. Isotype control antibody (Green line) was rabbit IgG (1ug/1x10⁶) used under the same conditions. Unlabelled sample without incubation with primary antibody and secondary antibody (Red line) was used as a blank control.

Submit a product review to [Biocompare.com](https://www.biocompare.com)

Submit a review of this product to [Biocompare.com](https://www.biocompare.com) to receive a \$20 Amazon.com giftcard! Your reviews help your fellow scientists make the right decisions. Thank you for your contribution.



Anti-Integrin beta 4/ITGB4 Antibody

For Research Use Only. Not for use in diagnostic procedures.