

Anti-Hepatic Lipase LIPC Antibody

Catalog Number: A01020-2

Overview

Product Name	Anti-Hepatic Lipase LIPC Antibody
Reactive Species	Human
Description	Boster Bio Anti-Hepatic Lipase LIPC Antibody catalog # A01020-2. Tested in ELISA, IHC, WB applications. This antibody reacts with Human.
Application	ELISA, IHC, WB
Clonality	Polyclonal
Formulation	Liquid in PBS containing 50% glycerol, 0.5% BSA and 0.02% sodium azide.
Storage Instructions	Store at -20°C for one year. For short term storage and frequent use, store at 4°C for up to one month. Avoid repeated freeze-thaw cycles.
Host	Rabbit
Uniprot ID	P11150

Technical Details

Immunogen	The antiserum was produced against synthesized peptide derived from human LIPC. AA range:301-350
Cross Reactivity	No cross reactivity with other proteins.
Isotype	IgG
Form	Liquid
Concentration	1 mg/ml
Purification	The antibody was affinity-purified from rabbit antiserum by affinity-chromatography using epitope-specific immunogen.
Suggested Dilutions	WB 1:500-1:2000 IHC 1:100-1:300 ELISA 1:10000

Anti-Hepatic Lipase LIPC Antibody (A01020-2) Images

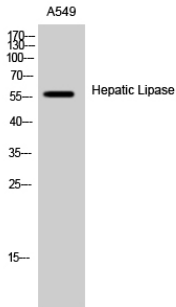


Figure 1. Western blotting validation for Anti-Hepatic Lipase LIPC Antibody A01020-2

Western Blot (WB) analysis of A549 cells using Hepatic Lipase polyclonal antibody. Electrophoresis was performed on a SDS-PAGE gel. To determine SDS-PAGE gel concentration

Submit a product review to Biocompare.com

Submit a review of this product to Biocompare.com to receive a \$20 Amazon.com giftcard! Your reviews help your fellow scientists make the right decisions. Thank you for your contribution.



Anti-Hepatic Lipase LIPC Antibody