

## Anti-Hepatic Lipase LIPC Antibody

Catalog Number: A01020-2

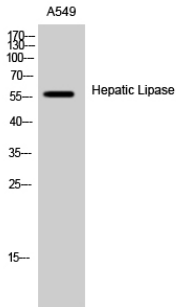
### Overview

Product Name	Anti-Hepatic Lipase LIPC Antibody
Reactive Species	Human, Mouse, Rat
Description	Boster Bio Anti-Hepatic Lipase LIPC Antibody catalog # A01020-2. Tested in ELISA, IHC, WB applications. This antibody reacts with Human.
Application	ELISA, IF, IHC, WB
Clonality	Polyclonal
Formulation	Liquid in PBS containing 50% glycerol, 0.5% stabilizing protein and 0.02% sodium azide. *This antibody is supplied in a stabilized formulation. Compatibility with conjugation reactions depends on the chemistry of the conjugation method used. For conjugation methods that are not compatible with the stabilizing components present in this formulation, a carrier-free antibody format is required.
Storage Instructions	Store at -20°C for one year. For short term storage and frequent use, store at 4°C for up to one month. Avoid repeated freeze-thaw cycles.
Host	Rabbit
Uniprot ID	P11150

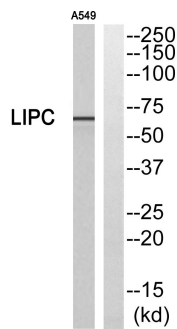
### Technical Details

Immunogen	The antiserum was produced against synthesized peptide derived from human LIPC. AA range:301-350
Cross Reactivity	No cross reactivity with other proteins.
Isotype	IgG
Form	Liquid
Concentration	1 mg/ml
Purification	The antibody was affinity-purified from rabbit antiserum by affinity-chromatography using epitope-specific immunogen.
Suggested Dilutions	WB 1:500-1:2000 IHC 1:100-1:300 ELISA 1:10000 IF 1:50-200

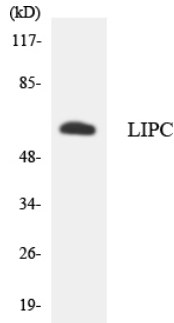
## Anti-Hepatic Lipase LIPC Antibody (A01020-2) Images



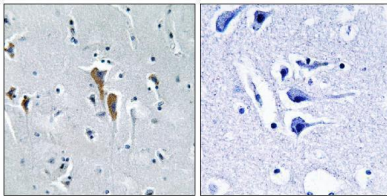
Western Blot analysis of A549 cells using Hepatic Lipase Polyclonal Antibody



Western blot analysis of LIPC Antibody. The lane on the right is blocked with the LIPC peptide.



Western blot analysis of the lysates from HT-29 cells using LIPC antibody.



Immunohistochemistry analysis of paraffin-embedded human brain, using LIPC Antibody. The lane on the right is blocked with the LIPC peptide.

### Submit a product review to Biocompare.com

Submit a review of this product to Biocompare.com to receive a \$20 Amazon.com giftcard! Your reviews help your fellow scientists make the right decisions. Thank you for your contribution.



Anti-Hepatic Lipase LIPC Antibody

For Research Use Only. Not for use in diagnostic procedures.