

Anti-Rpb1 (phospho-S1619) POLR2A Antibody

Catalog Number: A01029S1619

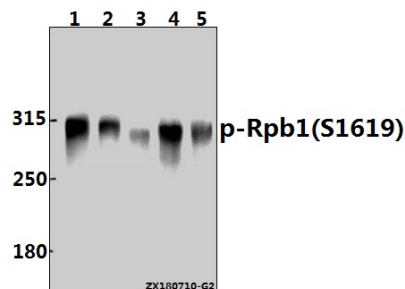
Overview

Product Name	Anti-Rpb1 (phospho-S1619) POLR2A Antibody
Reactive Species	Human, Mouse, Rat
Description	Boster Bio Anti-Rpb1 (phospho-S1619) POLR2A Antibody catalog # A01029S1619. Tested in WB,IHC applications. This antibody reacts with Human,Mouse,Rat.
Application	IHC, WB
Clonality	Polyclonal
Formulation	Rabbit IgG, 1mg/ml in PBS with 0.02% sodium azide, 50% glycerol, pH7.2
Storage Instructions	Store at -20°C for one year. For short term storage and frequent use, store at 4°C for up to one month. Avoid repeated freeze-thaw cycles.
Host	Rabbit
Uniprot ID	P24928

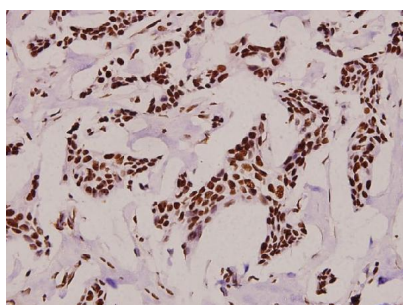
Technical Details

Immunogen	Synthetic phosphopeptide derived from human Rpb1 around the phosphorylation site of Serine 1619.
Cross Reactivity	No cross reactivity with other proteins.
Isotype	IgG
Form	Liquid
Concentration	1 mg/ml
Purification	The antibody was affinity-purified from rabbit antiserum by affinity-chromatography using epitope-specific immunogen and the purity is > 95% (by SDS-PAGE).
Suggested Dilutions	WB: 1:500-1:1000 IHC: 1:50-1:200

Anti-Rpb1 (phospho-S1619) POLR2A Antibody (A01029S1619) Images



Western blot (WB) analysis of p-Rpb1 (S1619) pAb at 1:2000 dilution Lane1:A549 whole cell lysate(40ug) Lane2:HeLa whole cell lysate(40ug) Lane3:A2780 whole cell lysate(40ug) Lane4:PC12 whole cell lysate(40ug) Lane5:3T3-L1 whole cell lysate(40ug)



Immunohistochemistry (IHC) analyzes of p-Rpb1 (S1619) pAb in paraffin-embedded human breast carcinoma tissue at 1:100.

Submit a product review to Biocompare.com

Submit a review of this product to Biocompare.com to receive a \$20 Amazon.com giftcard! Your reviews help your fellow scientists make the right decisions. Thank you for your contribution.



Anti-Rpb1 (phospho-S1619) POLR2A Antibody

For Research Use Only. Not for use in diagnostic procedures.