

Anti-POLR2A (Phospho-S2) Antibody

Catalog Number: A01029S2

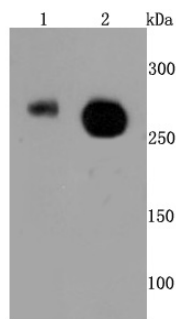
Overview

Product Name	Anti-POLR2A (Phospho-S2) Antibody
Reactive Species	Human, Mouse, Rat
Description	Boster Bio Anti-POLR2A (Phospho-S2) Antibody catalog # A01029S2. Tested in WB,IP,ICC/IF,IHC,Flow Cytometry applications. This antibody reacts with Human,Mouse,Rat.
Application	Flow Cytometry, IP, IF, IHC, ICC, WB
Clonality	Polyclonal
Formulation	Rabbit IgG, 1mg/ml in PBS with 0.02% sodium azide, 50% glycerol, pH7.2
Storage Instructions	Store at -20°C for one year. For short term storage and frequent use, store at 4°C for up to one month. Avoid repeated freeze-thaw cycles.
Host	Rabbit
Uniprot ID	P24928

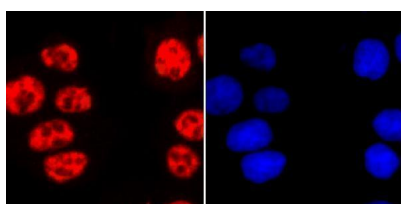
Technical Details

Immunogen	Synthetic phospho-peptide corresponding to residues surrounding Ser2 of human POLR2A.
Cross Reactivity	No cross reactivity with other proteins.
Isotype	IgG
Form	Liquid
Concentration	1 mg/ml
Purification	ProA affinity purified
Suggested Dilutions	WB: 1:500-1:2,000 ICC: 1:100-1:500 IHC: 1:50-1:200 FC: 1:50-1:100

Anti-POLR2A (Phospho-S2) Antibody (A01029S2) Images



Western blot analysis of Phospho-POLR2A (S2) on different cell lysates using anti-Phospho-POLR2A (S2) antibody at 1/500 dilution. Positive control □ Line 1: HeLa Line 2: MCF-7



ICC staining Phospho-POLR2A (S2) in HeLa cells (red). The nuclear counterstain is DAPI (blue). Cells were fixed in paraformaldehyde, permeabilized with 0.25% Triton X100/PBS.

Submit a product review to [Biocompare.com](https://www.biocompare.com)

Submit a review of this product to [Biocompare.com](https://www.biocompare.com) to receive a \$20 Amazon.com giftcard! Your reviews help your fellow scientists make the right decisions. Thank you for your contribution.



Anti-POLR2A (Phospho-S2) Antibody

For Research Use Only. Not for use in diagnostic procedures.