

## Anti-POLR2A (Phospho-S5) Antibody

Catalog Number: A01029S5

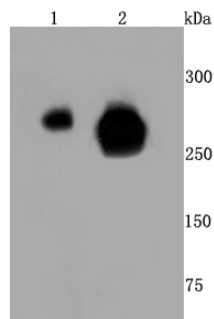
### Overview

|                      |   |
|----------------------|---|
| Product Name         | Anti-POLR2A (Phospho-S5) Antibody   |
| Reactive Species     | Human, Mouse, Rat   |
| Description          | Boster Bio Anti-POLR2A (Phospho-S5) Antibody catalog # A01029S5. Tested in WB,IP,ICC/IF,IHC,Flow Cytometry applications. This antibody reacts with Human,Mouse,Rat. |
| Application          | Flow Cytometry, IP, IF, IHC, ICC, WB  |
| Clonality            | Polyclonal  |
| Formulation          | Rabbit IgG, 1mg/ml in PBS with 0.02% sodium azide, 50% glycerol, pH7.2  |
| Storage Instructions | Store at -20°C for one year. For short term storage and frequent use, store at 4°C for up to one month. Avoid repeated freeze-thaw cycles.                          |
| Host                 | Rabbit  |
| Uniprot ID           | P24928  |

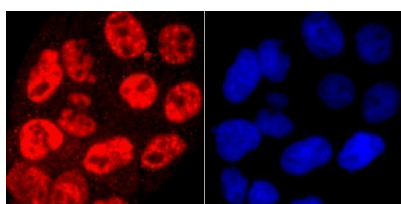
### Technical Details

|                     |   |
|---------------------|---|
| Immunogen           | Synthetic phospho-peptide corresponding to residues surrounding Ser5 of human POLR2A. |
| Cross Reactivity    | No cross reactivity with other proteins.  |
| Isotype             | IgG   |
| Form                | Liquid  |
| Concentration       | 1 mg/ml   |
| Purification        | ProA affinity purified  |
| Suggested Dilutions | WB: 1:500-1:2,000<br>ICC: 1:100-1:500<br>IHC: 1:50-1:200<br>FC: 1:50-1:100            |

## Anti-POLR2A (Phospho-S5) Antibody (A01029S5) Images



Western blot analysis of Phospho-POLR2A (S5) on different cells lysates using anti- Phospho-POLR2A (S5) antibody at 1/500 dilution. Positive control □ Line 1: Hela Line 2: MCF-7



ICC staining Phospho-POLR2A (S5) in Hela cells (red). The nuclear counter stain is DAPI (blue). Cells were fixed in paraformaldehyde, permeabilised with 0.25% Triton X100/PBS.

### Submit a product review to [Biocompare.com](https://www.biocompare.com)

Submit a review of this product to [Biocompare.com](https://www.biocompare.com) to receive a \$20 Amazon.com giftcard! Your reviews help your fellow scientists make the right decisions. Thank you for your contribution.



Anti-POLR2A (Phospho-S5) Antibody

For Research Use Only. Not for use in diagnostic procedures.