

Anti-Tec Antibody Picoband™

Catalog Number: A01031

About TEC

TEC (TEC Protein Tyrosine Kinase) is an enzyme that in humans is encoded by the TEC gene. The protein encoded by this gene belongs to the Tec family of non-receptor protein-tyrosine kinases containing a pleckstrin homology domain. By fluorescence in situ hybridization, Sato et al. (1994) mapped the gene to 4p12, the same location reported for TXK. Mouse Tec is a non-receptor type protein-tyrosine kinase that is highly expressed in many hematopoietic cell lines. Hantschel et al. (2007) identified TEC kinase and BTK kinase as major binders of the tyrosine kinase inhibitor dasatinib, which is used for treatment of BCR/ABL-positive CML.

Overview

Product Name	Anti-Tec Antibody Picoband™
Reactive Species	Human, Mouse, Rat
Description	Boster Bio Anti-Tec Antibody Picoband™ catalog # A01031. Tested in WB applications. This antibody reacts with Human, Mouse, Rat.
Application	WB
Clonality	Polyclonal
Formulation	Each vial contains 4mg Trehalose, 0.9mg NaCl, 0.2mg Na ₂ HPO ₄ , 0.05mg NaN ₃ .
Storage Instructions	Store at -20°C for one year from date of receipt. After reconstitution, at 4°C for one month. It can also be aliquotted and stored frozen at -20°C for six months. Avoid repeated freeze-thaw cycles.
Host	Rabbit
Uniprot ID	P42680

Technical Details

Immunogen	A synthetic peptide corresponding to a sequence at the N-terminus of human Tec, which shares 97.5% amino acid (aa) sequence identity with both mouse and rat Tec.
Predicted Reactive Species	Human
Recommended Detection Systems	Boster recommends Enhanced Chemiluminescent Kit with anti-Rabbit IgG (EK1002) for Western blot.
Cross Reactivity	No cross-reactivity with other proteins.
Isotype	Rabbit IgG
Form	Lyophilized
Concentration	Adding 0.2 ml of distilled water will yield a concentration of 500 ug/ml.

Purification	Immunogen affinity purified.
Suggested Dilutions	<p>Dilute the sample so that the expected range of concentrations fall within the detection range of this kit.</p> <p>If the expected range of concentration is unknown, a pilot test should be conducted to decide the optimal dilution ratio for your samples.</p> <p>Some PubMed article(s) citing the expression level of this target are as follows:</p> <p>Boster Bio's internal QC testing used:</p> <p>Western blot, 0.1-0.5ug/ml</p>

Anti-Tec Antibody Picoband™ (A01031) Images

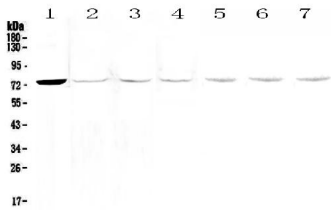


Figure 1. Western blot analysis of Tec using anti-Tec antibody (A01031).

Electrophoresis was performed on a 5-20% SDS-PAGE gel at 70V (Stacking gel) / 90V (Resolving gel) for 2-3 hours. The sample well of each lane was loaded with 50ug of sample under reducing conditions.

Lane 1: human Hela cell lysate,

Lane 2: human MCF-7 cell lysate,

Lane 3: human COLO-320 cell lysate,

Lane 4: human HepG2 cell lysate,

Lane 5: rat stomach tissue lysate,

Lane 6: mouse stomach tissue lysate,

Lane 7: mouse heart tissue lysate.

After Electrophoresis, proteins were transferred to a Nitrocellulose membrane at 150mA for 50-90 minutes.

Blocked the membrane with 5% Non-fat Milk/ TBS for 1.5 hour at RT. The membrane was incubated with rabbit anti-Tec antigen affinity purified polyclonal antibody (Catalog # A01031) at 0.5 ug/mL overnight at 4°C, then washed with TBS-0.1%Tween 3 times with 5 minutes each and probed with a goat anti-rabbit IgG-HRP secondary antibody at a dilution of 1:10000 for 1.5 hour at RT. The signal is developed using an Enhanced Chemiluminescent detection (ECL) kit (Catalog # EK1002) with Tanon 5200 system. A specific band was detected for Tec at approximately 73KD. The expected band size for Tec is at 73KD.

Submit a product review to Biocompare.com

Submit a review of this product to Biocompare.com to receive a \$20 Amazon.com giftcard! Your reviews help your fellow scientists make the right decisions. Thank you for your contribution.



Anti-Tec Antibody™