

Anti-Phospho-Paxillin (Y88) PXN Antibody

Catalog Number: A01033Y88

About PXN

4E-BP1 encodes one member of a family of translation repressor proteins. The protein directly interacts with eukaryotic translation initiation factor 4E (eIF4E), which is a limiting component of the multisubunit complex that recruits 40S ribosomal subunits to the 5' end of mRNAs. Interaction of this protein with eIF4E inhibits complex assembly and represses translation. This protein is phosphorylated in response to various signals including UV irradiation and insulin signaling, resulting in its dissociation from eIF4E and activation of mRNA translation.

Gingras AC, et al. (1998) Genes Dev 12(4): 502-513.

Brugarolas J, et al. (2004) Genes Dev 18(23): 2893-2904.

Kumar V, et al. (2000) EMBO J 19(5): 1087-1097.

Moody CA, et al. (2005) J Virol 79(9): 5499-5506.

Burnett PE, et al. (1998) Proc Natl Acad Sci U S A 95(4): 1432-1437.

Overview

Product Name	Anti-Phospho-Paxillin (Y88) PXN Antibody
Reactive Species	Human
Description	Boster Bio Anti-Phospho-Paxillin (Y88) PXN Antibody catalog # A01033Y88. Tested in ELISA, IHC, WB applications. This antibody reacts with Human.
Application	ELISA, IHC, WB
Clonality	Polyclonal
Formulation	Liquid in PBS containing 50% glycerol, 0.5% BSA and 0.02% sodium azide.
Storage Instructions	Store at -20°C for one year. For short term storage and frequent use, store at 4°C for up to one month. Avoid repeated freeze-thaw cycles.
Host	Rabbit
Uniprot ID	P49023

Technical Details

Immunogen	Synthesized peptide derived from human Paxillin around the phosphorylation site of Y88.
Predicted Reactive Species	Boar, Bovine, Canine, Golden Hamster
Cross Reactivity	No cross reactivity with other proteins.
Isotype	IgG

Form	Liquid
Concentration	1 mg/ml
Purification	The antibody was affinity-purified from rabbit antiserum by affinity-chromatography using epitope-specific immunogen.
Suggested Dilutions	<p>Dilute the sample so that the expected range of concentrations fall within the detection range of this kit.</p> <p>If the expected range of concentration is unknown, a pilot test should be conducted to decide the optimal dilution ratio for your samples.</p> <p>Some PubMed article(s) citing the expression level of this target are as follows:</p> <p>Boster Bio's internal QC testing used:</p> <p>WB 1:500-1:2000 IHC 1:100-1:300 ELISA 1:10000</p>

Anti-Phospho-Paxillin (Y88) PXN Antibody (A01033Y88) Images

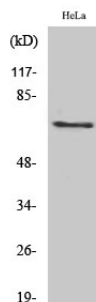


Figure 1. Western blotting validation for Anti-Phospho-Paxillin (Y88) PXN Antibody A01033Y88

Western Blot (WB) analysis of specific cells using Phospho-Paxillin (Y88) polyclonal antibody. Electrophoresis was performed on a SDS-PAGE gel. To determine SDS-PAGE gel concentration

Submit a product review to Biocompare.com

Submit a review of this product to Biocompare.com to receive a \$20 Amazon.com giftcard! Your reviews help your fellow scientists make the right decisions. Thank you for your contribution.



Anti-Phospho-Paxillin (Y88) PXN Antibody