

Anti-Ribosomal Protein S12 RPS12 Antibody

Catalog Number: A01040S12

About RPS12

Ribosomes, the organelles that catalyze protein synthesis, consist of a small 40S subunit and a large 60S subunit. Together these subunits are composed of 4 RNA species and approximately 80 structurally distinct proteins. This gene encodes a ribosomal protein that is a component of the 40S subunit. The protein belongs to the S12E family of ribosomal proteins. It is located in the cytoplasm. Increased expression of this gene in colorectal cancers compared to matched normal colonic mucosa has been observed. As is typical for genes encoding ribosomal proteins, there are multiple processed pseudogenes of this gene dispersed through the genome.

Herauld Y., Nucleic Acids Res. 19:4001-4001(1991).

Bienvénut W.V., Submitted (FEB-2008) to UniProtKB.

Vladimirov S.N., Eur. J. Biochem. 239:144-149(1996).

Overview

Product Name	Anti-Ribosomal Protein S12 RPS12 Antibody
Reactive Species	Human, Mouse, Rat
Description	Boster Bio Anti-Ribosomal Protein S12 RPS12 Antibody catalog # A01040S12. Tested in ELISA, IF, IHC, WB applications. This antibody reacts with Human, Mouse, Rat.
Application	ELISA, IF, IHC, WB
Clonality	Polyclonal
Formulation	Liquid in PBS containing 50% glycerol, 0.5% BSA and 0.02% sodium azide.
Storage Instructions	Store at -20°C for one year. For short term storage and frequent use, store at 4°C for up to one month. Avoid repeated freeze-thaw cycles.
Host	Rabbit
Uniprot ID	P25398

Technical Details

Immunogen	Synthesized peptide derived from human Ribosomal Protein S12
Predicted Reactive Species	Boar, Bovine, Canine, Golden Hamster
Cross Reactivity	No cross reactivity with other proteins.
Isotype	IgG
Form	Liquid

Concentration	1 mg/ml
Purification	The antibody was affinity-purified from rabbit antiserum by affinity-chromatography using epitope-specific immunogen.
Suggested Dilutions	<p>Dilute the sample so that the expected range of concentrations fall within the detection range of this kit.</p> <p>If the expected range of concentration is unknown, a pilot test should be conducted to decide the optimal dilution ratio for your samples.</p> <p>Some PubMed article(s) citing the expression level of this target are as follows:</p> <p>Boster Bio's internal QC testing used:</p> <p>WB 1:500-1:2000</p> <p>IHC 1:100-1:300</p> <p>IF 1:200-1:1000</p> <p>ELISA 1:40000</p>

Anti-Ribosomal Protein S12 RPS12 Antibody (A01040S12) Images

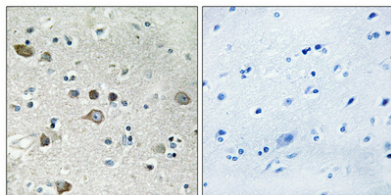


Figure 2. Immunohistochemistry validation of RPS12 using Anti-Ribosomal Protein S12 RPS12 Antibody (A01040S12).

Immunohistochemical analysis of paraffin-embedded Human brain. Antibody was diluted at 1:100 (4°C)

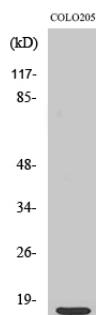


Figure 1. Western blotting validation for Anti-Ribosomal Protein S12 RPS12 Antibody A01040S12

Western Blot (WB) analysis of specific cells using Ribosomal Protein S12 polyclonal antibody.

Electrophoresis was performed on a SDS-PAGE gel. To determine SDS-PAGE gel concentration

Submit a product review to Biocompare.com

Submit a review of this product to Biocompare.com to receive a \$20 Amazon.com giftcard! Your reviews help your fellow scientists make the right decisions. Thank you for your contribution.



Anti-Ribosomal Protein S12 RPS12 Antibody