

## Anti-Rsk-1 (phospho-S380) RPS6KA1 Antibody

Catalog Number: A01058S380

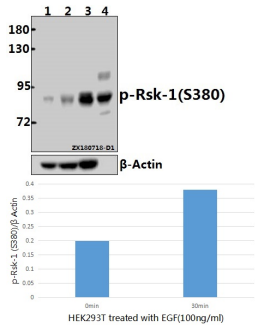
### Overview

Product Name	Anti-Rsk-1 (phospho-S380) RPS6KA1 Antibody
Reactive Species	Human
Description	Boster Bio Anti-Rsk-1 (phospho-S380) RPS6KA1 Antibody catalog # A01058S380. Tested in WB,IHC applications. This antibody reacts with Human.
Application	IHC, WB
Clonality	Polyclonal
Formulation	Rabbit IgG, 1mg/ml in PBS with 0.02% sodium azide, 50% glycerol, pH7.2
Storage Instructions	Store at -20°C for one year. For short term storage and frequent use, store at 4°C for up to one month. Avoid repeated freeze-thaw cycles.
Host	Rabbit
Uniprot ID	Q15418

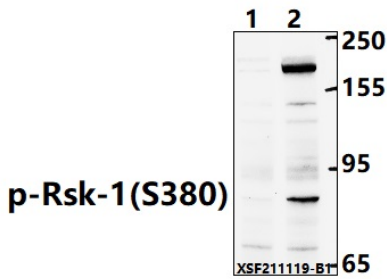
### Technical Details

Immunogen	Synthetic phosphopeptide derived from human Rsk-1 around the phosphorylation site of Serine 380.
Cross Reactivity	No cross reactivity with other proteins.
Isotype	IgG
Form	Liquid
Concentration	1 mg/ml
Purification	The antibody was affinity-purified from rabbit antiserum by affinity-chromatography using epitope-specific immunogen and the purity is > 95% (by SDS-PAGE).
Suggested Dilutions	WB: 1:1000-1:2000 IHC: 1:50-1:200

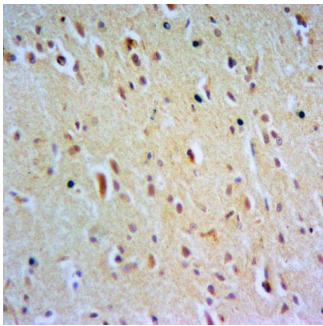
## Anti-Rsk-1 (phospho-S380) RPS6KA1 Antibody (A01058S380) Images



Western blot (WB) analysis of p-Rsk-1 (S380) pAb at 1:500 dilution Lane1:HEK293T whole cell lysate(40ug) Lane2:HEK293T treated with EGF(100ng/ml,30 minutes) whole cell lysate(40ug) Lane3:The Spleen tissue lysate of Mouse(40ug) Lane4:The Heart tissue lysate of Rat(40ug)



Western blot (WB) analysis of Rsk-1 (Phospho-S380) polyclonal antibody at 1:1000 dilution Lane1:HeLa treated with lambda-phosphatase whole cell lysate(40ug) Lane2:HeLa whole cell lysate(40ug)



Immunohistochemistry of paraffin-embedded Rat Brain using p-Rsk-1 (S380) antibody at dilution of 1:50.

**Submit a product review to Biocompare.com**

Submit a review of this product to Biocompare.com to receive a \$20 Amazon.com giftcard! Your reviews help your fellow scientists make the right decisions. Thank you for your contribution.



Anti-Rsk-1 (phospho-S380) RPS6KA1 Antibody

For Research Use Only. Not for use in diagnostic procedures.