

## Anti-Rsk-1 (phospho-S380) RPS6KA1 Antibody

Catalog Number: A01058S380-1

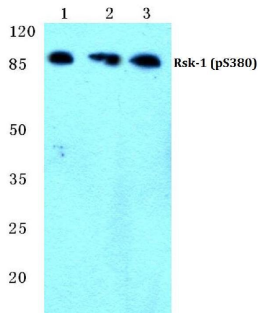
### Overview

Product Name	Anti-Rsk-1 (phospho-S380) RPS6KA1 Antibody
Reactive Species	Human, Mouse, Rat
Description	Boster Bio Anti-Rsk-1 (phospho-S380) RPS6KA1 Antibody catalog # A01058S380-1. Tested in WB,IHC applications. This antibody reacts with Human,Mouse,Rat.
Application	IHC, WB
Clonality	Polyclonal
Formulation	Rabbit IgG, 1mg/ml in PBS with 0.02% sodium azide, 50% glycerol, pH7.2
Storage Instructions	Store at -20°C for one year. For short term storage and frequent use, store at 4°C for up to one month. Avoid repeated freeze-thaw cycles.
Host	Rabbit
Uniprot ID	Q15418

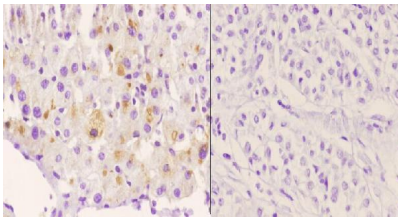
### Technical Details

Immunogen	Synthetic phosphopeptide derived from human Rsk-1 around the phosphorylation site of Serine 380.
Cross Reactivity	No cross reactivity with other proteins.
Isotype	IgG
Form	Liquid
Concentration	1 mg/ml
Purification	The antibody was affinity-purified from rabbit antiserum by affinity-chromatography using epitope-specific immunogen and the purity is > 95% (by SDS-PAGE).
Suggested Dilutions	WB: 1:500-1:1000 IHC: 1:50-1:200

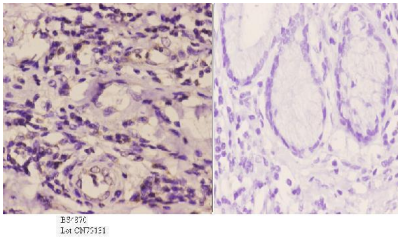
## Anti-Rsk-1 (phospho-S380) RPS6KA1 Antibody (A01058S380-1) Images



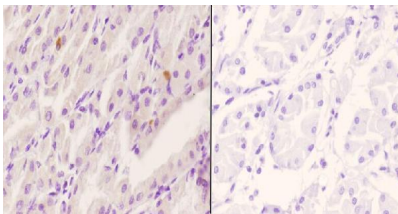
Western blot (WB) analysis of p-Rsk-1 (S380) polyclonal antibody at 1:500 dilution Lane1:HeLa cell lysate treated with PMA(100nM,15mins) Lane2:NIH-3T3 cell lysate treated with PMA(100nM,15mins) Lane3:PC12 cell lysate treated with PMA(100nM,15mins)



Immunohistochemistry (IHC) analyzes of p-Rsk-1 (S380) pAb in paraffin-embedded human liver carcinoma tissue at 1:50. showing cytoplasmic and nucleus staining. Negative control (the right) Using PBS instead of primary antibody, secondary antibody is Goat Anti-Rabbit IgG-biotin followed by avidin-peroxidase.



Immunohistochemistry (IHC) analyzes of p-Rsk-1 (S380) pAb in paraffin-embedded human esophageal carcinoma tissue at 1:50. showing cytoplasmic and nucleus staining. Negative control (the right) Using PBS instead of primary antibody, secondary antibody is Goat Anti-Rabbit IgG-biotin followed by avidin-peroxidase.



Immunohistochemistry (IHC) analyzes of p-Rsk-1 (S380) pAb in paraffin-embedded human stomach carcinoma tissue at 1:50. showing cytoplasmic and nucleus staining. Negative control (the right) Using PBS instead of primary antibody, secondary antibody is Goat Anti-Rabbit IgG-biotin followed by avidin-peroxidase.

### Submit a product review to [Biocompare.com](https://www.biocompare.com)

Submit a review of this product to [Biocompare.com](https://www.biocompare.com) to receive a \$20 Amazon.com giftcard! Your reviews help your fellow scientists make the right decisions. Thank you for your contribution.



Anti-Rsk-1 (phospho-S380) RPS6KA1 Antibody

For Research Use Only. Not for use in diagnostic procedures.