

Anti-Chk1/CHEK1 Antibody Picoband™

Catalog Number: A01060

About CHEK1

CHEK1, Cell cycle checkpoint kinase, is an enzyme that in humans is encoded by the CHEK1 gene. By fluorescence in situ hybridization, the human CHEK1 gene is mapped to 11q24, near the ATM gene at 11q23. CHEK1 is a kinase that phosphorylates cdc25, an important phosphatase in cell cycle control, particularly for entry into mitosis. Furthermore, CHEK1 acts to integrate signals from ATM and ATR, and is involved in monitoring meiotic recombination, a process that involves programmed DNA breaks.

Overview

Product Name	Anti-Chk1/CHEK1 Antibody Picoband™
Reactive Species	Human
Description	Boster Bio Anti-Chk1/CHEK1 Antibody Picoband™ catalog # A01060. Tested in WB applications. This antibody reacts with Human.
Application	WB
Clonality	Polyclonal
Formulation	Each vial contains 4 mg Trehalose, 0.9 mg NaCl, 0.2mg Na2HPO4, 0.05 mg NaN3.
Storage Instructions	Store at -20°C for one year from date of receipt. After reconstitution, at 4°C for one month. It can also be aliquotted and stored frozen at -20°C for six months. Avoid repeated freeze-thaw cycles.
Host	Rabbit
Uniprot ID	O14757

Technical Details

Immunogen	E.coli-derived human Chk1 recombinant protein (Position: M1-Q210). Human Chk1 shares 96.7% and 97.6% amino acid (aa) sequence identity with mouse and rat Chk1, respectively.
Predicted Reactive Species	Human
Recommended Detection Systems	Boster recommends Enhanced Chemiluminescent Kit with anti-Rabbit IgG (EK1002) for Western blot.
Cross Reactivity	No cross-reactivity with other proteins.
Isotype	Rabbit IgG
Form	Lyophilized
Concentration	Adding 0.2 ml of distilled water will yield a concentration of 500 ug/ml.

Purification	Immunogen affinity purified.
Suggested Dilutions	<p>Dilute the sample so that the expected range of concentrations fall within the detection range of this kit.</p> <p>If the expected range of concentration is unknown, a pilot test should be conducted to decide the optimal dilution ratio for your samples.</p> <p>Some PubMed article(s) citing the expression level of this target are as follows:</p> <p>Boster Bio's internal QC testing used:</p> <p>Western blot, 0.1-0.5ug/ml, Human</p>

Anti-Chk1/CHEK1 Antibody Picoband™ (A01060) Images

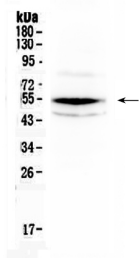


Figure 1. Western blot analysis of Chk1 using anti-Chk1 antibody (A01060).

Electrophoresis was performed on a 5-20% SDS-PAGE gel at 70V (Stacking gel) / 90V (Resolving gel) for 2-3 hours. The sample well of each lane was loaded with 50ug of sample under reducing conditions.

Lane 1: SW620 whole cell lysates.

After Electrophoresis, proteins were transferred to a Nitrocellulose membrane at 150mA for 50-90 minutes.

Blocked the membrane with 5% Non-fat Milk/ TBS for 1.5 hour at RT. The membrane was incubated with rabbit anti-Chk1 antigen affinity purified polyclonal antibody (Catalog # A01060) at 0.5 ug/mL overnight at 4°C, then washed with TBS-0.1%Tween 3 times with 5 minutes each and probed with a goat anti-rabbit IgG-HRP secondary antibody at a dilution of 1:10000 for 1.5 hour at RT. The signal is developed using an Enhanced Chemiluminescent detection (ECL) kit (Catalog # EK1002) with Tanon 5200 system. A specific band was detected for Chk1 at approximately 54KD. The expected band size for Chk1 is at 54KD.

Submit a product review to Biocompare.com

Submit a review of this product to Biocompare.com to receive a \$20 Amazon.com giftcard! Your reviews help your fellow scientists make the right decisions. Thank you for your contribution.



Anti-Chk1/CHEK1 Antibody™