

Anti-Chk1 (Phospho-S296) CHEK1 Antibody

Catalog Number: A01060S296

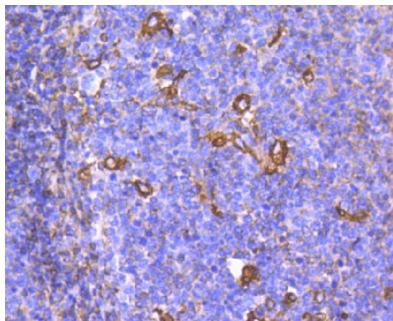
Overview

Product Name	Anti-Chk1 (Phospho-S296) CHEK1 Antibody
Reactive Species	Human
Description	Boster Bio Anti-Chk1 (Phospho-S296) CHEK1 Antibody catalog # A01060S296. Tested in WB,IHC applications. This antibody reacts with Human.
Application	IHC, WB
Clonality	Polyclonal
Formulation	Rabbit IgG, 1mg/ml in PBS with 0.02% sodium azide, 50% glycerol, pH7.2
Storage Instructions	Store at -20°C for one year. For short term storage and frequent use, store at 4°C for up to one month. Avoid repeated freeze-thaw cycles.
Host	Rabbit
Uniprot ID	O14757

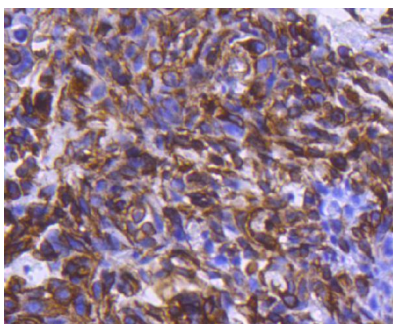
Technical Details

Immunogen	Synthetic phospho-peptide corresponding to residues surrounding Ser296 of human Chk1
Cross Reactivity	No cross reactivity with other proteins.
Isotype	IgG
Form	Liquid
Concentration	1 mg/ml
Purification	ProA affinity purified
Suggested Dilutions	WB: 1:1,000 IHC: 1:50-1:200

Anti-Chk1 (Phospho-S296) CHEK1 Antibody (A01060S296) Images



Immunohistochemical analysis of paraffin-embedded human tonsil tissue using anti-phospho-Chk1 (S296) antibody. Counter stained with hematoxylin.



Immunohistochemical analysis of paraffin-embedded human breast carcinoma tissue using anti-phospho-Chk1 (S296) antibody. Counter stained with hematoxylin.

Submit a product review to [Biocompare.com](https://www.biocompare.com)

Submit a review of this product to [Biocompare.com](https://www.biocompare.com) to receive a \$20 Amazon.com giftcard! Your reviews help your fellow scientists make the right decisions. Thank you for your contribution.



Anti-Chk1 (Phospho-S296) CHEK1 Antibody

For Research Use Only. Not for use in diagnostic procedures.