

Anti-Ski oncogene Ski Antibody

Catalog Number: A01062

About SKI

TGF-beta is a ubiquitously expressed cytokine that signals through the Smad protein family to regulate numerous cellular processes such as embryonic development and tumorigenesis. This signaling is negatively regulated by Ski, the mammalian homolog of the transforming protein of an avian retrovirus that induces oncogenic transformation of chicken embryo cells, and the related protein SnoN. Ski functions by binding to the Smad proteins and preventing their phosphorylation, thereby inhibiting their ability to bind DNA and activate the transcription of downstream genes. Ski will also bind to the Smad proteins specific to bone morphogenic proteins (BMPs) and block BMP signaling in mammalian cells.

Overview

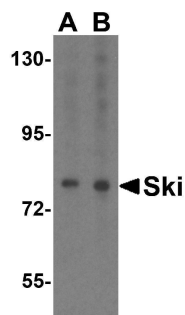
Product Name	Anti-Ski oncogene Ski Antibody
Reactive Species	Human
Description	Boster Bio Anti-Ski oncogene Ski Antibody (Catalog # A01062). Tested in ELISA, WB, IF applications. This antibody reacts with Human.
Application	ELISA, IF, WB
Clonality	Polyclonal
Formulation	Ski Antibody is supplied in PBS containing 0.02% sodium azide.
Storage Instructions	Ski antibody can be stored at 4°C for three months and -20°C, stable for up to one year. Avoid repeated freeze-thaw cycles. Antibodies should not be exposed to prolonged high temperatures.
Host	Rabbit
Uniprot ID	P12755

Technical Details

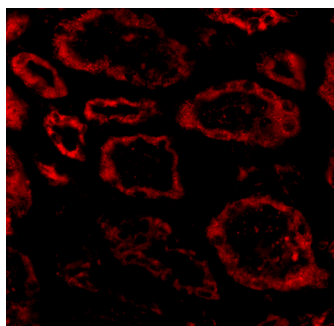
Immunogen	Ski antibody was raised against a 14 amino acid synthetic peptide from near the amino terminus of human Ski. The immunogen is located within the first 50 amino acids of Ski.
Predicted Reactive Species	Chicken, Horse, Mouse
Isotype	IgG
Form	Liquid
Concentration	1 mg/ml
Purification	Ski Antibody is affinity chromatography purified via peptide column.
Suggested Dilutions	SkiP antibody can be used for detection of Ski by Western blot at 1 - 2 ug/mL. Antibody can also be used for immunohistochemistry starting at 20 ug/mL. For immunofluorescence start at 20 ug/mL.

Antibody validated: Western Blot in human samples and Immunofluorescence in human samples. All other applications and species not yet tested. Optimal dilutions for each application should be determined by the researcher.

Anti-Ski oncogene Ski Antibody (A01062) Images



Western blot analysis of Ski in HeLa cell lysate with Ski antibody at (A) 1 and (B) 2 ug/mL.



Immunofluorescence of Ski in human kidney tissue with Ski antibody at 20 ug/mL.

1 Publications Citing This Product

1. PubMed ID: 30896889, Zhang H,Wang JS,Chen XG,Kang L,Lin MB.Overexpression of c-Ski promotes cell proliferation, invasion and migration of gastric cancer associated fibroblasts.Kaohsiung J Med Sci.2019 Apr;35(4):214-221.doi:10.1002/kjm2.12042.Epub 2019 Mar 21.PMID:30896889.

Visit bosterbio.com/anti-ski-oncogene-ski-antibody-a01062-boster.html to see all 1 publications.

Submit a product review to Biocompare.com

Submit a review of this product to Biocompare.com to receive a \$20 Amazon.com giftcard! Your reviews help your fellow scientists make the right decisions. Thank you for your contribution.



Anti-Ski oncogene Ski Antibody

For Research Use Only. Not for use in diagnostic procedures.