

Anti-CYP11A1 Antibody

Catalog Number: A01071

About CYP11A1

Involved in calcium induced regulation of ion channel and activation of the map kinase signaling pathway. May represent an important signaling intermediate between neuropeptide activated receptors or neurotransmitters that increase calcium flux and the downstream signals that regulate neuronal activity. Interacts with the SH2 domain of Grb2. May phosphorylate the voltage-gated potassium channel protein Kv1.2. Its activation is highly correlated with the stimulation of c-Jun N-terminal kinase activity. Involved in osmotic stress-dependent SNCA 'Tyr-125' phosphorylation.

Gluck SL, et al. (2004) J Clin Invest; 114(12): 1696-1699

Benzing T, et al. (2001) Proc Natl Acad Sci U S A; 98(17): 9784-9789

Tian D, et al. (2002) Mol Cell Biol; 22(8): 2650-2662

Lu Z, et al. (2001) Mol Cell Biol; 21(12): 4016-4031

Krishnan HH, et al. (2006) J Virol; 80(3): 1167-1180

Overview

Product Name	Anti-CYP11A1 Antibody
Reactive Species	Human, Mouse, Rat
Description	Boster Bio Anti-CYP11A1 Antibody catalog # A01071. Tested in WB,ICC applications. This antibody reacts with Human,Mouse,Rat.
Application	ICC, WB
Clonality	Polyclonal
Formulation	Rabbit IgG, 1mg/ml in PBS with 0.02% sodium azide, 50% glycerol, pH7.2
Storage Instructions	Store at -20°C for one year. For short term storage and frequent use, store at 4°C for up to one month. Avoid repeated freeze-thaw cycles.
Host	Rabbit
Uniprot ID	P05108

Technical Details

Immunogen	Synthesized peptide derived from human NOS1 around the phosphorylation site of S852.
Predicted Reactive Species	Boar, Bovine, Canine, Golden Hamster
Cross Reactivity	No cross reactivity with other proteins.
Isotype	IgG

Form	Liquid
Concentration	1 mg/ml
Purification	The antibody was affinity-purified from rabbit antiserum by affinity-chromatography using epitope-specific immunogen and the purity is > 95% (by SDS-PAGE).
Suggested Dilutions	<p>Dilute the sample so that the expected range of concentrations fall within the detection range of this kit.</p> <p>If the expected range of concentration is unknown, a pilot test should be conducted to decide the optimal dilution ratio for your samples.</p> <p>Some PubMed article(s) citing the expression level of this target are as follows:</p> <p>Boster Bio's internal QC testing used:</p> <p>WB: 1:500-1:1000</p> <p>ICC: 1:50-1:200</p>

Anti-CYP11A1 Antibody (A01071) Images

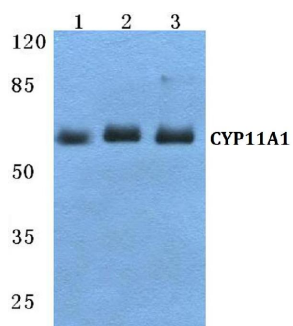


Figure 1. Western blotting validation for Anti-CYP11A1 Antibody A01071

Western blot (WB) analysis of CYP11A1 polyclonal antibody at 1:500 dilution

Lane1: Jurkat cell lysate

Lane2: Mouse liver tissue lysate

Lane3: Rat liver tissue lysate

Electrophoresis was performed on a SDS-PAGE gel. To determine SDS-PAGE gel concentration

Submit a product review to Biocompare.com

Submit a review of this product to Biocompare.com to receive a \$20 Amazon.com giftcard! Your reviews help your fellow scientists make the right decisions. Thank you for your contribution.



Anti-CYP11A1 Antibody