

Anti-IL-1RI IL1R1 Antibody

Catalog Number: A01092-1

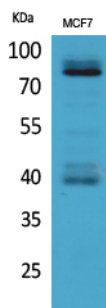
Overview

| | |
|----------------------|--|
| Product Name | Anti-IL-1RI IL1R1 Antibody |
| Reactive Species | Human, Mouse, Rat |
| Description | Boster Bio Anti-IL-1RI IL1R1 Antibody catalog # A01092-1. Tested in ELISA, IHC, WB applications. This antibody reacts with Human. |
| Application | ELISA, IF, IHC, WB |
| Clonality | Polyclonal |
| Formulation | Liquid in PBS containing 50% glycerol, 0.5% stabilizing protein and 0.02% sodium azide. *This antibody is supplied in a stabilized formulation. Compatibility with conjugation reactions depends on the chemistry of the conjugation method used. For conjugation methods that are not compatible with the stabilizing components present in this formulation, a carrier-free antibody format is required. |
| Storage Instructions | Store at -20°C for one year. For short term storage and frequent use, store at 4°C for up to one month. Avoid repeated freeze-thaw cycles. |
| Host | Rabbit |
| Uniprot ID | P14778 |

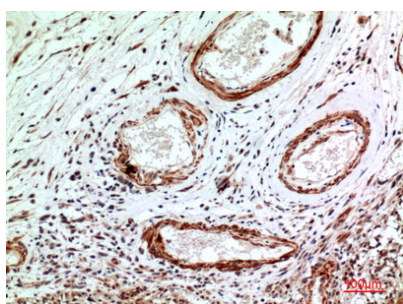
Technical Details

| | |
|---------------------|--|
| Immunogen | The antiserum was produced against synthesized peptide derived from the N-terminal region of human IL1R1. AA range:31-80 |
| Cross Reactivity | No cross reactivity with other proteins. |
| Isotype | IgG |
| Form | Liquid |
| Concentration | 1 mg/ml |
| Purification | The antibody was affinity-purified from rabbit antiserum by affinity-chromatography using epitope-specific immunogen. |
| Suggested Dilutions | WB 1:500-1:2000 IHC: 1:100-300 ELISA 1:20000 IF 1:50-200 |

Anti-IL-1RI IL1R1 Antibody (A01092-1) Images



Western Blot analysis of MCF7 cells using IL-1RI Polyclonal Antibody. Secondary antibody was diluted at 1:20000



Immunohistochemical analysis of paraffin-embedded human-brain, antibody was diluted at 1:100

Submit a product review to Biocompare.com

Submit a review of this product to Biocompare.com to receive a \$20 Amazon.com giftcard! Your reviews help your fellow scientists make the right decisions. Thank you for your contribution.



Anti-IL-1RI IL1R1 Antibody

For Research Use Only. Not for use in diagnostic procedures.