

Anti-SCARB1 Antibody

Catalog Number: A01093

About SCARB1

Scavenger receptor class B member 1 (SCARB1), also known as SR-BI, is part of the scavenger receptor superfamily, which is composed of many members with diverse structures, expression patterns, and functions. SCARB1 is a multi-ligand cell-surface receptor that mediates the selective uptake of lipid from HDL cholesterol into cells and is expressed in steroidogenic tissues in adult animals. Other ligands of SCARB1 include native, acetylated, or oxidized LDL and anionic phospholipids. SCARB1-deficient mice have elevated HDL levels and increased susceptibility to atherosclerosis on fat feeding, indicating its importance in the regulation of cholesterol homeostasis. Along with CLDN1, LDL-R, and the tetraspanin superfamily member CD81, SCARB1 has been reported to be an entry factor for the Hepatitis C virus.

Overview

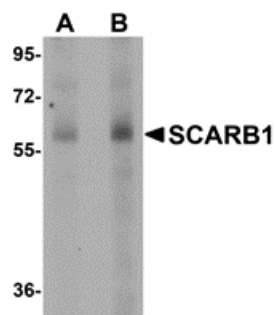
Product Name	Anti-SCARB1 Antibody
Reactive Species	Human, Mouse, Rat
Description	Boster Bio Anti-SCARB1 Antibody (Catalog # A01093). Tested in ELISA, WB, IHC-P, IF applications. This antibody reacts with Human, Mouse, Rat.
Application	ELISA, IF, IHC-P, WB
Clonality	Polyclonal
Formulation	SCARB1 Antibody is supplied in PBS containing 0.02% sodium azide.
Storage Instructions	SCARB1 antibody can be stored at 4°C for three months and -20°C, stable for up to one year. Avoid repeated freeze-thaw cycles. Antibodies should not be exposed to prolonged high temperatures.
Host	Rabbit
Uniprot ID	Q8WTV0

Technical Details

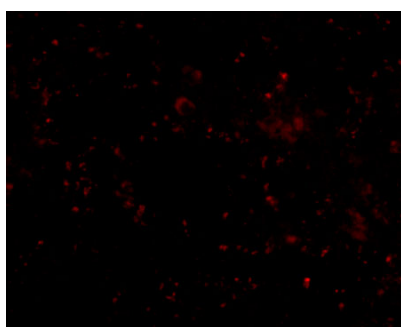
Immunogen	SCARB1 antibody was raised against a 15 amino acid synthetic peptide near the amino terminus of human SCARB1. The immunogen is located within amino acids 70 - 120 of SCARB1.
Predicted Reactive Species	Bovine, Pig
Cross Reactivity	At least two isoforms of SCARB1 are known to exist; this antibody can detect both isoforms.
Isotype	IgG
Form	Liquid
Concentration	1 mg/mL

Purification	SCARB1 Antibody is affinity chromatography purified via peptide column.
Suggested Dilutions	SCARB1 antibody can be used for detection of SCARB1 by Western blot at 1 - 2 ug/mL. Antibody can also be used for immunohistochemistry starting at 2.5 ug/mL. For immunofluorescence start at 20 ug/mL. Antibody validated: Western Blot in human samples; Immunohistochemistry in human samples and Immunofluorescence in human samples. All other applications and species not yet tested. Optimal dilutions for each application should be determined by the researcher.

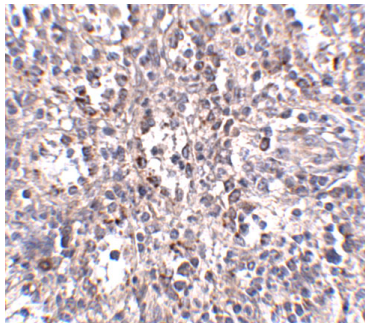
Anti-SCARB1 Antibody (A01093) Images



Western blot analysis of SCARB1 in human spleen tissue lysate with SCARB1 antibody at (A) 1 and (B) 2 ug/mL.



Immunofluorescence of SCARB1 in Human Spleen tissue with SCARB1 antibody at 20 ug/mL.



Immunohistochemistry of SCARB1 in human spleen tissue with SCARB1 antibody at 2.5 ug/mL.

Submit a product review to [Biocompare.com](https://www.biocompare.com)

Submit a review of this product to [Biocompare.com](https://www.biocompare.com) to receive a \$20 Amazon.com giftcard! Your reviews help your fellow scientists make the right decisions. Thank you for your contribution.



Anti-SCARB1 Antibody

For Research Use Only. Not for use in diagnostic procedures.