

Anti-C/EBP-Beta (phospho-T235/188) CEBPB Antibody

Catalog Number: A01100T235

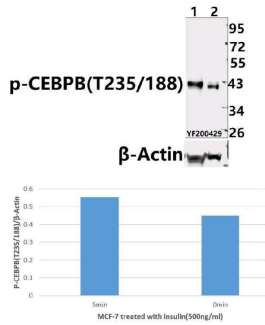
Overview

Product Name	Anti-C/EBP-Beta (phospho-T235/188) CEBPB Antibody
Reactive Species	Human
Description	Boster Bio Anti-C/EBP-Beta (phospho-T235/188) CEBPB Antibody catalog # A01100T235. Tested in WB,IHC applications. This antibody reacts with Human.
Application	IHC, WB
Clonality	Polyclonal
Formulation	Rabbit IgG, 1mg/ml in PBS with 0.02% sodium azide, 50% glycerol, pH7.2
Storage Instructions	Store at -20°C for one year. For short term storage and frequent use, store at 4°C for up to one month. Avoid repeated freeze-thaw cycles.
Host	Rabbit
Uniprot ID	P17676

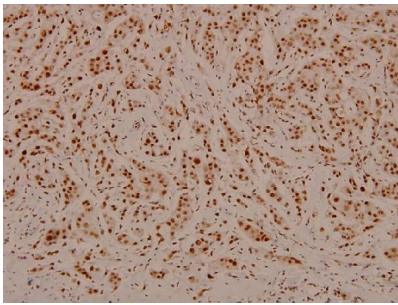
Technical Details

Immunogen	Synthetic phosphopeptide derived from human C/EBP-beta around the phosphorylation site of Threonine 235.
Cross Reactivity	No cross reactivity with other proteins.
Isotype	Rabbit IgG
Form	Liquid
Concentration	1 mg/ml
Purification	The antibody was affinity-purified from rabbit antiserum by affinity-chromatography using epitope-specific immunogen and the purity is > 95% (by SDS-PAGE).
Suggested Dilutions	WB: 1:500-1:1000 IHC: 1:50-1:200

Anti-C/EBP-Beta (phospho-T235/188) CEBPB Antibody (A01100T235) Images



Western blot (WB) analysis of C/EBP-beta (phospho-T235/188) pAb at 1:500 dilution Lane1:MCF-7 treated with insulin(500ng/ml,5min) whole cell lysate(40ug) Lane2:MCF-7 treated with insulin(500ng/ml,0min) whole cell lysate (40ug)



Immunohistochemistry (IHC) analyzes of p-C/EBP-beta (T235/188) pAb in paraffin-embedded human breast carcinoma tissue at 1:100.

Submit a product review to Biocompare.com

Submit a review of this product to Biocompare.com to receive a \$20 Amazon.com giftcard! Your reviews help your fellow scientists make the right decisions. Thank you for your contribution.



Anti-C/EBP-Beta (phospho-T235/188) CEBPB Antibody

For Research Use Only. Not for use in diagnostic procedures.