

Anti-EDA1 Antibody

Catalog Number: A01113

About EDA

Ectodysplasin A (EDA1) is a member of the TNF-related ligand family involved in the early epithelial-mesenchymal interaction that regulates ectodermal appendage formation (1). It is a trimeric type II membrane protein that co-localizes with cytoskeletal structures at the lateral and apical surfaces of cells and can be expressed as eight alternatively spliced isoforms in hair follicles and in the epidermis of adult skin (2,3). EDAs are required during development, and loss or mutation of EDA1 results in a group of developmental disorders identified as ectodermal dysplasia type 1 (4,5).

Overview

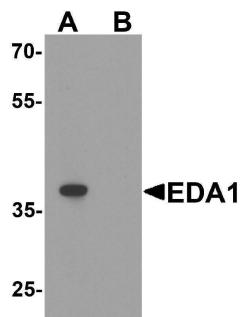
Product Name	Anti-EDA1 Antibody
Reactive Species	Human, Mouse, Rat
Description	Boster Bio Anti-EDA1 Antibody (Catalog # A01113). Tested in ELISA, WB, IHC-P, IF applications. This antibody reacts with Human, Mouse, Rat.
Application	ELISA, IF, IHC-P, WB
Clonality	Polyclonal
Formulation	EDA1 antibody is supplied in PBS containing 0.02% sodium azide.
Storage Instructions	EDA1 antibody can be stored at 4°C for three months and -20°C, stable for up to one year.
Host	Rabbit
Uniprot ID	Q92838

Technical Details

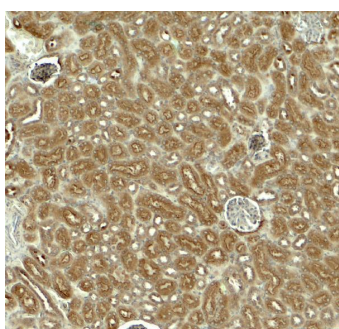
Immunogen	EDA1 antibody was raised against an 19 amino acid peptide near the center of human EDA1. The immunogen is located within amino acids 130 - 180 of EDA1.
Predicted Reactive Species	Bovine
Cross Reactivity	EDA1 antibody is human, mouse and rat reactive. Multiple isoforms of EDA1 are known to exist.
Isotype	IgG
Form	Liquid
Concentration	1 mg/mL
Purification	EDA1 antibody is affinity chromatography purified via peptide column.
Suggested Dilutions	EDA1 antibody can be used for detection of EDA1 by Western blot at 1 - 2 ug/ml. Antibody can also

be used for immunohistochemistry starting at 5 ug/mL. For immunofluorescence start at 20 ug/mL. Antibody validated: Western Blot in mouse samples; Immunohistochemistry in mouse samples and Immunofluorescence in mouse samples. All other applications and species not yet tested. Optimal dilutions for each application should be determined by the researcher.

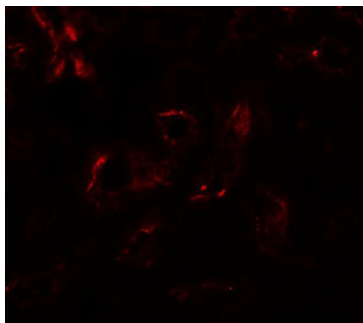
Anti-EDA1 Antibody (A01113) Images



Western blot analysis of EDA1 in mouse kidney tissue lysate with EDA1 antibody at 1 ug/ml in (A) the absence and (B) the presence of blocking peptide.



Immunohistochemistry of EDA1 in mouse kidney tissue with EDA1 antibody at 5 ug/ml.



Immunofluorescence of EDA1 in mouse kidney tissue with EDA1 antibody at 20 ug/ml.

Submit a product review to [Biocompare.com](https://www.biocompare.com)

Submit a review of this product to [Biocompare.com](https://www.biocompare.com) to receive a \$20 Amazon.com giftcard! Your reviews help your fellow scientists make the right decisions. Thank you for your contribution.



Anti-EDA1 Antibody

For Research Use Only. Not for use in diagnostic procedures.