

Anti-CD40L CD40LG Antibody

Catalog Number: A01114

About CD40LG

Pseudokinase which, in complex with CAB39/MO25 (CAB39/MO25alpha or CAB39L/MO25beta), binds to and activates STK11/LKB1. Adopts a closed conformation typical of active protein kinases and binds STK11/LKB1 as a pseudosubstrate, promoting conformational change of STK11/LKB1 in an active conformation.

Scanlan M.J., Cancer Immun. 1:4-4(2001).

Ota T., Nat. Genet. 36:40-45(2004).

Baas A.F., EMBO J. 22:3062-3072(2003).

Overview

Product Name	Anti-CD40L CD40LG Antibody
Reactive Species	Human, Mouse
Description	Boster Bio Anti-CD40L CD40LG Antibody catalog # A01114. Tested in WB,ICC/IF,IHC,Flow Cytometry applications. This antibody reacts with Human,Mouse.
Application	Flow Cytometry, IF, IHC, ICC, WB
Clonality	Polyclonal
Formulation	Rabbit IgG, 1mg/ml in PBS with 0.02% sodium azide, 50% glycerol, pH7.2
Storage Instructions	Store at -20°C for one year. For short term storage and frequent use, store at 4°C for up to one month. Avoid repeated freeze-thaw cycles.
Host	Rabbit
Uniprot ID	P29965

Technical Details

Immunogen	Synthesized peptide derived from human Strad
Predicted Reactive Species	Boar, Bovine, Canine, Golden Hamster
Cross Reactivity	No cross reactivity with other proteins.
Isotype	IgG
Form	Liquid
Concentration	1 mg/ml

Purification	ProA affinity purified
Suggested Dilutions	<p>Dilute the sample so that the expected range of concentrations fall within the detection range of this kit.</p> <p>If the expected range of concentration is unknown, a pilot test should be conducted to decide the optimal dilution ratio for your samples.</p> <p>Some PubMed article(s) citing the expression level of this target are as follows:</p> <p>Boster Bio's internal QC testing used:</p> <p>WB: 1:500-1:1,000</p> <p>ICC: 1:50-1:200</p> <p>IHC: 1:50-1:200</p> <p>FC: 1:50-1:100</p>

Anti-CD40L CD40LG Antibody (A01114) Images

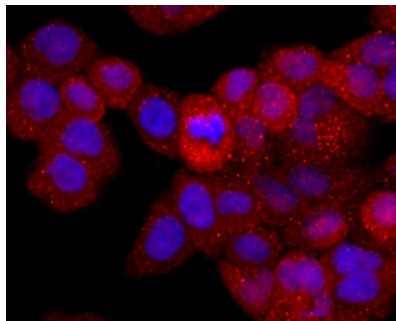


Figure 2. Immunocytochemistry staining of CD40LG using Anti-CD40L CD40LG Antibody (A01114).

ICC staining CD40L in Hela cells (red). The nuclear counter stain is DAPI (blue). Cells were fixed in paraformaldehyde

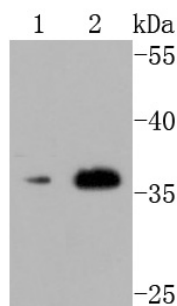


Figure 1. Western blotting validation for Anti-CD40L CD40LG Antibody A01114

Western blot analysis of CD40L on different cells lysates using anti-CD40L antibody at 1/500 dilution. Positive control: Lane 1: Hela Lane 2: Mouse liver
Electrophoresis was performed on a SDS-PAGE gel. To determine SDS-PAGE gel concentration

Submit a product review to Biocompare.com

Submit a review of this product to Biocompare.com to receive a \$20 Amazon.com giftcard! Your reviews help your fellow scientists make the right decisions. Thank you for your contribution.



Anti-CD40L CD40LG Antibody