

Anti-CRTC2 Antibody

Catalog Number: A01118

About CRTC2

CRTC2, also known as TORC2 (Transducers Of Regulated cAMP Response Element-Binding (CREB)) 2 and the related protein CRTC1 are potent CREB coactivators that are exported from the nucleus in a CRM1-dependent manner via phosphorylation-dependent interactions. Studies suggest that their phosphorylation and nuclear/cytoplasmic shuttling play an important role in the regulation of gluconeogenesis by cAMP. CRTC2 is present in both B and T-lymphocytes and abundantly expressed in the thymus. Its activity is important in regulating the expression of genes involved in cellular energy metabolism while CRTC1 is essential for energy balance and fertility.

Overview

Product Name	Anti-CRTC2 Antibody
Reactive Species	Human, Mouse, Rat
Description	Boster Bio Anti-CRTC2 Antibody (Catalog # A01118). Tested in ELISA, WB, IHC-P, IF applications. This antibody reacts with Human, Mouse, Rat.
Application	ELISA, IF, IHC-P, WB
Clonality	Polyclonal
Formulation	CRTC2 Antibody is supplied in PBS containing 0.02% sodium azide.
Storage Instructions	CRTC2 antibody can be stored at 4°C for three months and -20°C, stable for up to one year.
Host	Rabbit
Uniprot ID	Q53ET0

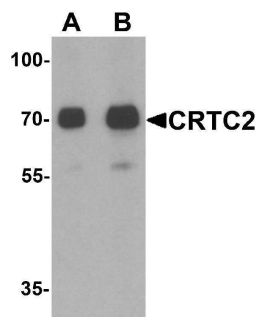
Technical Details

Immunogen	CRTC2 antibody was raised against a 16 amino acid peptide near the carboxy terminus of human CRTC2. The immunogen is located within the last 50 amino acids of CRTC2.
Predicted Reactive Species	Bovine
Cross Reactivity	Multiple isoforms of CRTC2 are known to exist. CRTC2 antibody is predicted to not cross-react with CRTC1.
Isotype	IgG
Form	Liquid
Concentration	1 mg/mL
Purification	CRTC2 Antibody is affinity chromatography purified via peptide column.

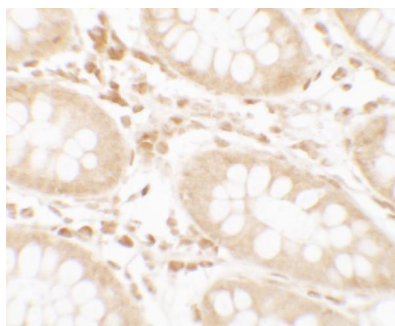
Suggested Dilutions

CRTC2 antibody can be used for detection of CRTC2 by Western blot at 1 - 2 ug/mL.
Antibody validated: Western Blot in human samples; Immunohistochemistry in human samples and Immunofluorescence in human samples. All other applications and species not yet tested. Optimal dilutions for each application should be determined by the researcher.

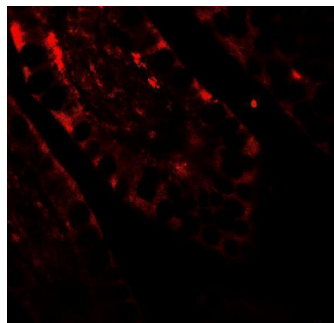
Anti-CRTC2 Antibody (A01118) Images



Western blot analysis of CRTC2 in human small intestine tissue lysate with CRTC2 antibody at (A) 0.5 and (B) 1 ug/mL.



Immunohistochemistry of CRTC2 in human small intestine tissue with CRTC2 antibody at 2.5 ug/ml.



Immunofluorescence of CRTC2 in human small intestine tissue with CRTC2 antibody at 20 ug/ml.

Submit a product review to [Biocompare.com](https://www.biocompare.com)

Submit a review of this product to [Biocompare.com](https://www.biocompare.com) to receive a \$20 Amazon.com giftcard! Your reviews help your fellow scientists make the right decisions. Thank you for your contribution.



Anti-CRTC2 Antibody

For Research Use Only. Not for use in diagnostic procedures.