

Anti-Aldh3A1 Antibody

Catalog Number: A01121

About ALDH3A1

Aldh3A1 is a member of the aldehyde dehydrogenase superfamily, a group of NAD(P)(+)-dependent enzymes that catalyze the oxidation of a wide spectrum of aliphatic and aromatic aldehydes. Aldh3A1 is highly expressed in stomach and even more strongly in cornea, representing between 5 to 50% of the water soluble protein fraction in mammalian corneas. It is thought that Aldh3A1 acts to protect the cornea from UV-induced oxidative stress by not only detoxification of reactive aldehydes but also through the direct absorption of UV energy. However, corneas from Aldh3A1-null mice are indistinguishable from those from wild-type mice; mice lacking both Aldh3A1 and Aldh1A1 showed increased cataract formation following UVB exposure, suggesting that Aldh1A1 may be able to compensate for the loss of Aldh3A1.

Overview

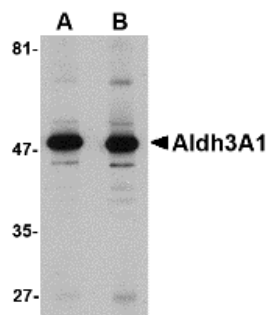
Product Name	Anti-Aldh3A1 Antibody
Reactive Species	Human, Mouse, Rat
Description	Boster Bio Anti-Aldh3A1 Antibody (Catalog # A01121). Tested in ELISA, WB applications. This antibody reacts with Human, Mouse, Rat.
Application	ELISA, WB
Clonality	Polyclonal
Formulation	Aldh3A1 Antibody is supplied in PBS containing 0.02% sodium azide.
Storage Instructions	Aldh3A1 antibody can be stored at 4°C for three months and -20°C, stable for up to one year. Avoid repeated freeze-thaw cycles. Antibodies should not be exposed to prolonged high temperatures.
Host	Rabbit
Uniprot ID	P30838

Technical Details

Immunogen	Aldh3A1 antibody was raised against a 13 amino acid synthetic peptide near the carboxy terminus of the human Aldh3A1. The immunogen is located within the last 50 amino acids of Aldh3A1.
Predicted Reactive Species	Bovine
Cross Reactivity	At least two isoforms of Aldh3A1 are known to exist. This antibody is predicted to have no cross-reactivity to Aldh3A2.
Isotype	IgG
Form	Liquid
Concentration	1 mg/mL

Purification	Aldh3A1 Antibody is affinity chromatography purified via peptide column.
Suggested Dilutions	Aldh3A1 antibody can be used for detection of Aldh3A1 by Western blot at 1 - 2 ug/mL. Antibody validated: Western Blot in human samples. All other applications and species not yet tested. Optimal dilutions for each application should be determined by the researcher.

Anti-Aldh3A1 Antibody (A01121) Images



Western blot analysis of Aldh3A1 in human stomach lysate with Aldh3A1 antibody at (A) 1 and (B) 2 ug/mL.

Submit a product review to Biocompare.com

Submit a review of this product to Biocompare.com to receive a \$20 Amazon.com giftcard! Your reviews help your fellow scientists make the right decisions. Thank you for your contribution.



Anti-Aldh3A1 Antibody

For Research Use Only. Not for use in diagnostic procedures.