

Anti-MEF2C Antibody (S387)

Catalog Number: A01131

About MEF2C

MEF2C is a transcription activator which binds specifically to the MEF2 element present in the regulatory regions of many muscle-specific genes. This protein controls cardiac morphogenesis and myogenesis, and is also involved in vascular development. It may also be involved in neurogenesis and in the development of cortical architecture.

Overview

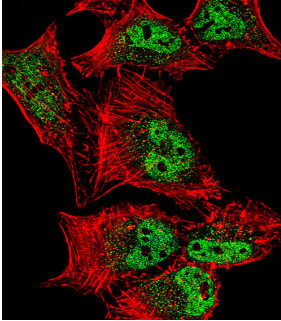
Product Name	Anti-MEF2C Antibody (S387)
Reactive Species	Human, Mouse
Description	Boster Bio Anti-MEF2C Antibody (S387) (Catalog # A01131). Tested in IF, IHC-P, WB application(s). This antibody reacts with Human, Mouse.
Application	IF, IHC-P, WB
Clonality	Polyclonal
Formulation	Purified polyclonal antibody supplied in PBS with 0.09% (W/V) sodium azide.
Storage Instructions	Maintain refrigerated at 2-8°C for up to 2 weeks. For long-term storage, store at -20°C in small aliquots to prevent freeze-thaw cycles.
Host	Rabbit
Uniprot ID	Q06413

Technical Details

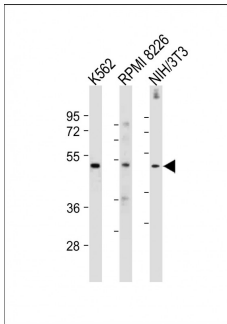
Immunogen	This MEF2C antibody is generated from rabbits immunized with a KLH conjugated synthetic peptide between 365-394 amino acids from human MEF2C.
Predicted Reactive Species	Pig, Rat
Recommended Detection Systems	Boster recommends Enhanced Chemiluminescent Kit with anti-Rabbit IgG (EK1002) for Western blot, and HRP Conjugated anti-Rabbit IgG Super Vision Assay Kit (SV0002-1) for IHC(P).
Cross Reactivity	No cross reactivity with other proteins.
Isotype	Rabbit IgG
Form	Liquid
Purification	This antibody is purified through a protein A column, followed by peptide affinity purification.
Suggested Dilutions	IF: 1:10-1:50

WB: 1:1000-2000
IHC-P: 1:10-1:50

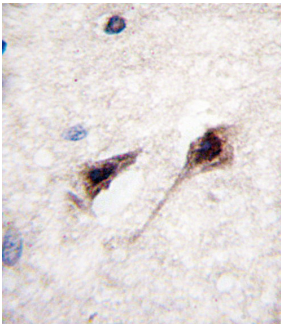
Anti-MEF2C Antibody (S387) (A01131) Images



Fluorescent confocal image of HeLa cell stained with MEF2C Antibody (S387). HeLa cells were fixed with 4% PFA (20 min), permeabilized with Triton X-100 (0.1%, 10 min), then incubated with MEF2C primary antibody (1:25, 1 h at 37°C). For secondary antibody, Alexa Fluor® 488 conjugated donkey anti-rabbit antibody (green) was used (1:400, 50 min at 37°C). Cytoplasmic actin was counterstained with Alexa Fluor® 555 (red) conjugated Phalloidin at 37°C. Nuclei were counterstained with DAPI (blue) (10 µg/ml, 10 min). MEF2C immunoreactivity is localized to vesicles and Nucleus significantly.



All lanes : Anti-MEF2C-pS387. ctrl at 1:1000-2000 dilution
Lane 1: K562 whole cell lysate
Lane 2: RPMI 8226 whole cell lysate
Lane 3: NIH/3T3 whole cell lysate
Lysates/proteins at 20 µg per lane. Secondary Goat Anti-Rabbit IgG, (H+L), Peroxidase conjugated at 1/10000 dilution. Predicted band size : 51 kDa
Blocking/Dilution buffer: 5% NFDM/TBST.



Formalin-fixed and paraffin-embedded human brain tissue reacted with MEF2C Antibody (S387) (Cat. #A01131), which was peroxidase-conjugated to the secondary antibody, followed by DAB staining. This data demonstrates the use of this antibody for immunohistochemistry; clinical relevance has not been evaluated.

Submit a product review to Biocompare.com

Submit a review of this product to Biocompare.com to receive a \$20 Amazon.com giftcard! Your reviews help your fellow scientists make the right decisions. Thank you for your contribution.



Anti-MEF2C Antibody (S387)

For Research Use Only. Not for use in diagnostic procedures.