

Anti-MEF2C (phospho-S396) Antibody

Catalog Number: A01131S396

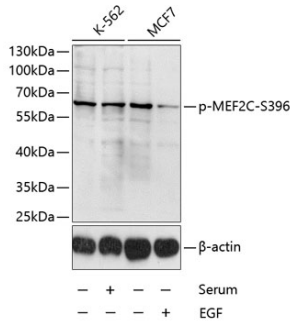
Overview

Product Name	Anti-MEF2C (phospho-S396) Antibody
Reactive Species	Human
Description	Boster Bio Anti-MEF2C (phospho-S396) Antibody catalog # A01131S396. Tested in WB applications. This antibody reacts with Human.
Application	WB
Clonality	Polyclonal
Formulation	Rabbit IgG, 1mg/ml in PBS with 0.02% sodium azide, 50% glycerol, pH7.2
Storage Instructions	Store at -20°C for one year. For short term storage and frequent use, store at 4°C for up to one month. Avoid repeated freeze-thaw cycles.
Host	Rabbit
Uniprot ID	Q06413

Technical Details

Immunogen	A synthetic phosphorylated peptide around S396 of human MEF2C(NP_002388.2).
Cross Reactivity	No cross reactivity with other proteins.
Isotype	IgG
Form	Liquid
Concentration	1 mg/ml
Purification	The antibody was affinity-purified from rabbit antiserum by affinity-chromatography using epitope-specific immunogen and the purity is > 95% (by SDS-PAGE).
Suggested Dilutions	WB: 1:500-1:2000

Anti-MEF2C (phospho-S396) Antibody (A01131S396) Images



Western blot analysis of extracts of K-562 and MCF-7 cells, using Phospho-MEF2C-S396 antibody at 1:1000 dilution. K562 cells were treated by 10% FBS for 30 minutes after serum-starvation overnight. MCF7 cells were treated by EGF for 30 minutes after serum-starvation overnight. Secondary antibody: HRP Goat Anti-Rabbit IgG at 1:10000 dilution. Lysates/proteins: 25ug per lane. Blocking buffer: 3% BSA.

Submit a product review to Biocompare.com

Submit a review of this product to Biocompare.com to receive a \$20 Amazon.com giftcard! Your reviews help your fellow scientists make the right decisions. Thank you for your contribution.



Anti-MEF2C (phospho-S396) Antibody

For Research Use Only. Not for use in diagnostic procedures.