

Anti-Na⁺ CP type IV Alpha SCN4A Antibody

Catalog Number: A01138-1

About SCN4A

This protein mediates the voltage-dependent sodium ion permeability of excitable membranes. Assuming opened or closed conformations in response to the voltage difference across the membrane, the protein forms a sodium-selective channel through which Na⁺ ions may pass in accordance with their electrochemical gradient. This sodium channel may be present in both denervated and innervated skeletal muscle.

George A.L. Jr., Ann. Neurol. 31:131-137(1992).

Wang J., Biochem. Biophys. Res. Commun. 182:794-801(1992).

Tsujino A., Proc. Natl. Acad. Sci. U.S.A. 100:7377-7382(2003).

Overview

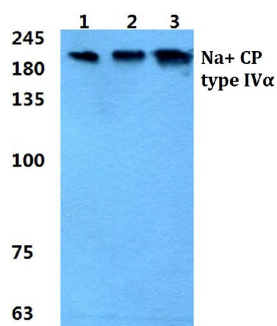
Product Name	Anti-Na ⁺ CP type IV Alpha SCN4A Antibody
Reactive Species	Human, Mouse, Rat
Description	Boster Bio Anti-Na ⁺ CP type IV Alpha SCN4A Antibody catalog # A01138-1. Tested in WB applications. This antibody reacts with Human,Mouse,Rat.
Application	WB
Clonality	Polyclonal
Formulation	Rabbit IgG, 1mg/ml in PBS with 0.02% sodium azide, 50% glycerol, pH7.2
Storage Instructions	Store at -20°C for one year. For short term storage and frequent use, store at 4°C for up to one month. Avoid repeated freeze-thaw cycles.
Host	Rabbit
Uniprot ID	P35499

Technical Details

Immunogen	Synthesized peptide derived from internal of human SCN4A.
Predicted Reactive Species	Boar, Bovine, Canine, Golden Hamster
Cross Reactivity	No cross reactivity with other proteins.
Isotype	IgG
Form	Liquid
Concentration	1 mg/ml

Purification	The antibody was affinity-purified from rabbit antiserum by affinity-chromatography using epitope-specific immunogen and the purity is > 95% (by SDS-PAGE).
Suggested Dilutions	<p>Dilute the sample so that the expected range of concentrations fall within the detection range of this kit.</p> <p>If the expected range of concentration is unknown, a pilot test should be conducted to decide the optimal dilution ratio for your samples.</p> <p>Some PubMed article(s) citing the expression level of this target are as follows:</p> <p>Boster Bio's internal QC testing used:</p> <p>WB: 1:500-1:1000</p>

Anti-Na⁺ CP type IV Alpha SCN4A Antibody (A01138-1) Images



Submit a product review to Biocompare.com

Submit a review of this product to Biocompare.com to receive a \$20 Amazon.com giftcard! Your reviews help your fellow scientists make the right decisions. Thank you for your contribution.



Anti-Na⁺ CP type IV Alpha SCN4A Antibody