

Anti-Ik β -Alpha (phospho-S32/S36) NFKBIA Antibody

Catalog Number: A01139S32S36

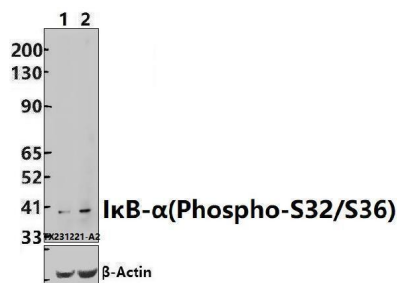
Overview

Product Name	Anti-Ik β -Alpha (phospho-S32/S36) NFKBIA Antibody
Reactive Species	Human, Mouse, Rat
Description	Boster Bio Anti-Ik β -Alpha (phospho-S32/S36) NFKBIA Antibody catalog # A01139S32S36. Tested in WB,IHC,IF applications. This antibody reacts with Human,Mouse,Rat.
Application	IF, IHC, WB
Clonality	Polyclonal
Formulation	Rabbit IgG, 1mg/ml in PBS with 0.02% sodium azide, 50% glycerol, pH7.2
Storage Instructions	Store at -20°C for one year. For short term storage and frequent use, store at 4°C for up to one month. Avoid repeated freeze-thaw cycles.
Host	Rabbit
Uniprot ID	P25963

Technical Details

Immunogen	Synthetic phosphopeptide derived from human IkappaB-alpha around the phosphorylation site of Serine 32/Serine 36.
Cross Reactivity	No cross reactivity with other proteins.
Isotype	IgG
Form	Liquid
Concentration	1 mg/ml
Purification	The antibody was affinity-purified from rabbit antiserum by affinity-chromatography using epitope-specific immunogen and the purity is > 95% (by SDS-PAGE).
Suggested Dilutions	WB: 1:500-1:1000 IHC: 1:50-1:200 IF: 1:50-1:200

Anti-IkB-Alpha (phospho-S32/S36) NFKBIA Antibody (A01139S32S36) Images



Western blot (WB) analysis of IkappaB-alpha (Phospho-S32/S36) polyclonal antibody at 1:200 dilution Lane 1: THP-1 whole cell lysate (30ug) Lane 2: THP-1 treated with PMA (200nM, 30min) whole cell lysate (30ug)

Submit a product review to Biocompare.com

Submit a review of this product to Biocompare.com to receive a \$20 Amazon.com giftcard! Your reviews help your fellow scientists make the right decisions. Thank you for your contribution.



Anti-IkB-Alpha (phospho-S32/S36) NFKBIA Antibody

For Research Use Only. Not for use in diagnostic procedures.