

## Anti-IkB-Alpha (phospho-Y42) NFKBIA Antibody

Catalog Number: A01139Y42

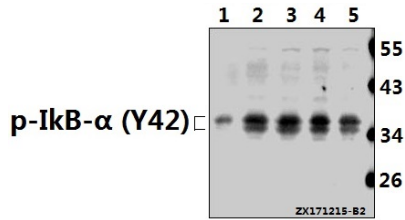
### Overview

Product Name	Anti-IkB-Alpha (phospho-Y42) NFKBIA Antibody
Reactive Species	Human, Mouse, Rat
Description	Boster Bio Anti-IkB-Alpha (phospho-Y42) NFKBIA Antibody catalog # A01139Y42. Tested in WB,IHC applications. This antibody reacts with Human,Mouse,Rat.
Application	IHC, WB
Clonality	Polyclonal
Formulation	Rabbit IgG, 1mg/ml in PBS with 0.02% sodium azide, 50% glycerol, pH7.2
Storage Instructions	Store at -20°C for one year. For short term storage and frequent use, store at 4°C for up to one month. Avoid repeated freeze-thaw cycles.
Host	Rabbit
Uniprot ID	P25963

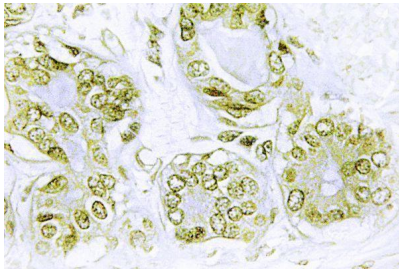
### Technical Details

Immunogen	Synthetic phosphopeptide derived from human IκB-alpha around the phosphorylation site of Tyrosine 42.
Cross Reactivity	No cross reactivity with other proteins.
Isotype	IgG
Form	Liquid
Concentration	1 mg/ml
Purification	The antibody was affinity-purified from rabbit antiserum by affinity-chromatography using epitope-specific immunogen and the purity is > 95% (by SDS-PAGE).
Suggested Dilutions	WB: 1:500-1:1000 IHC: 1:50-1:200

## Anti-IkB-Alpha (phospho-Y42) NFKBIA Antibody (A01139Y42) Images



Western blot (WB) analysis of p-IkB-alpha (Y42) pAb at 1:500 dilution Lane1:The Brain tissue lysate of Mouse(40ug) Lane2:SGC7901 whole cell lysate(40ug) Lane3:HCT116 whole cell lysate(40ug) Lane4:MCF-7 whole cell lysate(40ug) Lane5:Beas-2B whole cell lysate(40ug)



Immunohistochemistry (IHC) analyzes of p-IkappaB-alpha (Y42) pAb in paraffin-embedded human breast carcinoma tissue.

### Submit a product review to [Biocompare.com](https://www.biocompare.com)

Submit a review of this product to [Biocompare.com](https://www.biocompare.com) to receive a \$20 Amazon.com giftcard! Your reviews help your fellow scientists make the right decisions. Thank you for your contribution.



Anti-IkB-Alpha (phospho-Y42) NFKBIA Antibody

For Research Use Only. Not for use in diagnostic procedures.