

Anti-PKC Epsilon PRKCE Antibody

Catalog Number: A01151

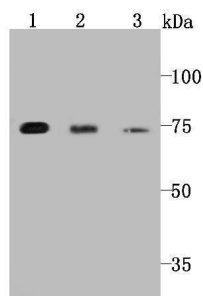
Overview

Product Name	Anti-PKC Epsilon PRKCE Antibody
Reactive Species	Human, Mouse, Rat
Description	Boster Bio Anti-PKC Epsilon PRKCE Antibody catalog # A01151. Tested in WB,ICC,IHC,Flow Cytometry applications. This antibody reacts with Human,Mouse,Rat.
Application	Flow Cytometry, IHC, ICC, WB
Clonality	Polyclonal
Formulation	Rabbit IgG, 1mg/ml in PBS with 0.02% sodium azide, 50% glycerol, pH7.2
Storage Instructions	Store at -20°C for one year. For short term storage and frequent use, store at 4°C for up to one month. Avoid repeated freeze-thaw cycles.
Host	Rabbit
Uniprot ID	Q02156

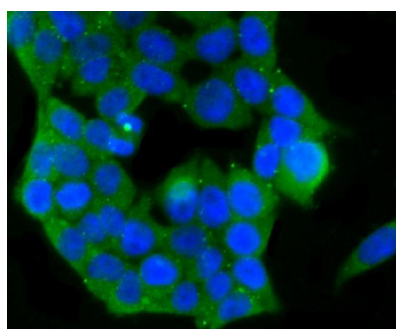
Technical Details

Immunogen	recombinant protein
Cross Reactivity	No cross reactivity with other proteins.
Isotype	IgG
Form	Liquid
Concentration	1 mg/ml
Purification	ProA affinity purified
Suggested Dilutions	WB: 1:500-1:1,000 ICC: 1:50-1:200 IHC: 1:50-1:200 FC: 1:50-1:100

Anti-PKC Epsilon PRKCE Antibody (A01151) Images



Western blot analysis of PKC epsilon on different cell lysate using anti-PKC epsilon antibody at 1/1,000 dilution. Positive control □ Lane1: Jurkat Lane2: MCF-7 Lane3: HT-29



ICC staining PKC epsilon in 293T cells (green). The nuclear counter stain is DAPI (blue). Cells were fixed in paraformaldehyde, permeabilised with 0.25% Triton X100/PBS.

Submit a product review to Biocompare.com

Submit a review of this product to Biocompare.com to receive a \$20 Amazon.com giftcard! Your reviews help your fellow scientists make the right decisions. Thank you for your contribution.



Anti-PKC Epsilon PRKCE Antibody

For Research Use Only. Not for use in diagnostic procedures.