

Anti-PKC Epsilon (phospho-S729) PRKCE Antibody

Catalog Number: A01151S729

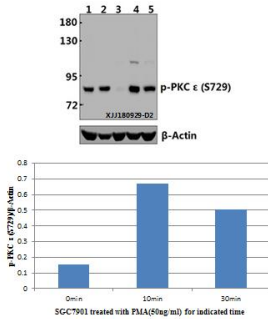
Overview

Product Name	Anti-PKC Epsilon (phospho-S729) PRKCE Antibody
Reactive Species	Human
Description	Boster Bio Anti-PKC Epsilon (phospho-S729) PRKCE Antibody catalog # A01151S729. Tested in WB applications. This antibody reacts with Human.
Application	WB
Clonality	Polyclonal
Formulation	Rabbit IgG, 1mg/ml in PBS with 0.02% sodium azide, 50% glycerol, pH7.2
Storage Instructions	Store at -20°C for one year. For short term storage and frequent use, store at 4°C for up to one month. Avoid repeated freeze-thaw cycles.
Host	Rabbit
Uniprot ID	Q02156

Technical Details

Immunogen	Synthetic phosphopeptide derived from human PKC epsilon around the phosphorylation site of Serine 729
Cross Reactivity	No cross reactivity with other proteins.
Isotype	IgG
Form	Liquid
Concentration	1 mg/ml
Purification	The antibody was affinity-purified from rabbit antiserum by affinity-chromatography using epitope-specific immunogen and the purity is > 95% (by SDS-PAGE).
Suggested Dilutions	WB: 1:500-1:1000

Anti-PKC Epsilon (phospho-S729) PRKCE Antibody (A01151S729) Images



Western blot (WB) analysis of PKC epsilon (phospho-S729) polyclonal antibody at 1:500 dilution Lane1:HEK293 whole cell lysate(40µg) Lane2:U-87MG whole cell lysate(40µg) Lane3:SGC7901 whole cell lysate(40µg) Lane4:SGC7901 treated with PMA(50ng/ml)for 5 minutes then repair for 10 minutes whole cell lysate(40µg) Lane5:SGC7901 treated with PMA(50ng/ml)for 5 minutes then repair for 30 minutes whole cell lysate(40µg)

Submit a product review to Biocompare.com

Submit a review of this product to Biocompare.com to receive a \$20 Amazon.com giftcard! Your reviews help your fellow scientists make the right decisions. Thank you for your contribution.



Anti-PKC Epsilon (phospho-S729) PRKCE Antibody

For Research Use Only. Not for use in diagnostic procedures.