

Anti-IL-11 Antibody

Catalog Number: A01160-2

Introduction

CD3epsilon is a 20kD chain, which together with CD3lambda, CD3delta, and CD3zeta, and a T cell receptor (alpha/beta or gamma/delta) form the CD3/T-cell receptor complex. It is a specific marker for T lymphocytes, NK T cells, and some thymocytes. Crosslinking of TCR initiates an intracellular signaling cascade resulting in cellular activation and proliferation. The OKT3 antibody has been reported to have potent immunosuppressive properties in vivo and has been proved effective in the treatment of renal, heart, and liver allograft rejection.

This antibody is routinely tested by flow cytometric analysis. Flow cytometry and other applications were tested during antibody development or are reported in the literature.

Application Information

Each lot of this antibody has been quality control tested by flow cytometric analysis of human PBMCs. For flow cytometric staining, the recommended use of this antibody is $\leq 0.5\mu\text{g}$ per 1×10^6 cells in $100\mu\text{l}$ of staining volume followed by a secondary fluorescent conjugated anti-mouse antibody. However, it is strongly suggested that the antibody reactivity be empirically titrated for optimal performance in the application of interest.

About IL-11

Interleukin 11 is a pleiotropic cytokine that has multiple effects on both hematopoietic and nonhematopoietic cells. Many of the biological effects described for IL-11 overlap those for IL-6 (1). It directly stimulates the proliferation of hematopoietic stem cells and megakaryocyte progenitor cells and induces megakaryocyte maturation resulting in increased platelet production (2). IL-11 promotes the proliferation of hepatocytes in response to liver damage. IL-11 binds to its receptor formed by IL6ST and either IL11RA1 or IL11RA2 (3). Clinically it is used to prevent severe thrombocytopenia and the reduction of the need for platelet transfusion following myelo-suppressive chemotherapy (4).

Overview

Product Name	Anti-IL-11 Antibody
Reactive Species	Human
Description	Boster Bio Anti-IL-11 Antibody (Catalog # A01160-2). Tested in ELISA, WB, ICC, IF applications. This antibody reacts with Human.
Conjugate	Biotin
Application	ELISA, IF, ICC, WB
Clonality	Polyclonal SK7
Formulation	IL-11 Antibody is supplied in PBS containing 0.02% sodium azide.
Storage Instructions	IL-11 antibody can be stored at 4°C for three months and -20°C, stable for up to one year.
Host	Rabbit

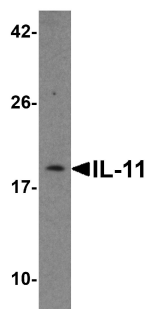
Uniprot ID

P20809

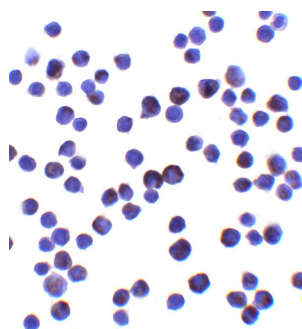
Technical Details

Immunogen	IL-11 antibody was raised against a 16 amino acid peptide from near the amino terminus of human IL-11. The immunogen is located within amino acids 40 - 90 of IL-11.
Predicted Reactive Species	Mouse, Rat
Cross Reactivity	IL-11 antibody is human specific. At least two isoforms of IL-11 are known to exist; this antibody will only detect the longest isoform of IL-11.
Isotype	IgG
Form	Liquid
Concentration	1 mg/mL
Purification	IL-11 Antibody is affinity chromatography purified via peptide column.
Suggested Dilutions	<p>Dilute the sample so that the expected range of concentrations fall within the detection range of this kit.</p> <p>If the expected range of concentration is unknown, a pilot test should be conducted to decide the optimal dilution ratio for your samples.</p> <p>Some PubMed article(s) citing the expression level of this target are as follows:</p> <p>Boster Bio's internal QC testing used:</p> <p>IL-11 antibody can be used for the detection of IL-11 by Western blot at 1 - 2 ug/mL. Antibody can also be used for immunocytochemistry at 10 ug/ml.</p> <p>Antibody validated: Western Blot in human samples; Immunocytochemistry in human samples and Immunofluorescence in human samples. All other applications and species not yet tested. Optimal dilutions for each application should be determined by the researcher.</p>

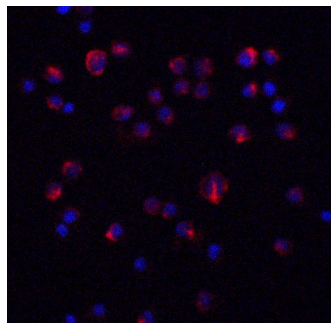
Anti-IL-11 Antibody (A01160-2) Images



Western blot analysis of IL-11 in HeLa Cell lysate with IL-11 antibody at 1 ug/ml.



Immunocytochemistry of IL-11 in HeLa cells with IL-11 antibody at 10 ug/ml.



Immunofluorescence of IL-11 in HeLa cells with IL-11 antibody at 20 ug/ml.

Red: IL-11 Antibody (A01160-2)
Blue: DAPI staining

Submit a product review to Biocompare.com

Submit a review of this product to Biocompare.com to receive a \$20 Amazon.com giftcard! Your reviews help your fellow scientists make the right decisions. Thank you for your contribution.



Anti-IL-11 Antibody