

Anti-ZEB2 Antibody

Catalog Number: A01169

About ZEB2

ZEB2, initially identified as Smad interacting-protein 1, is normally located in the nucleus and functions as a DNA-binding transcriptional repressor that interacts with activated SMADs. Like the homologous ZEB1, ZEB2 inhibits the transcription of the E-cadherin gene and induces epithelial-mesenchymal transition, a genetic program controlling cell migration during embryonic development and wound healing, in vitro. ZEB2 can also protect cells from DNA damage-induced apoptosis, suggesting that its expression may contribute to tumor progression. Recent evidence has shown that ZEB2 is often observed in the cytoplasm in numerous cancer tissues, indicating that its localization may be regulated in normal and tumor tissues. Mutations in this gene are also associated with Hirschsprung disease/Mowat-Wilson syndrome.

Overview

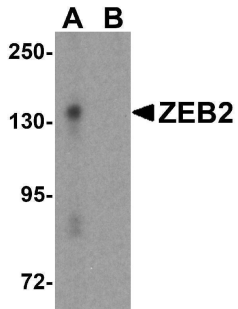
Product Name	Anti-ZEB2 Antibody
Reactive Species	Human, Mouse, Rat
Description	Boster Bio Anti-ZEB2 Antibody (Catalog # A01169). Tested in ELISA, WB, ICC, IF applications. This antibody reacts with Human, Mouse, Rat.
Application	ELISA, IF, ICC, WB
Clonality	Polyclonal
Formulation	ZEB2 Antibody is supplied in PBS containing 0.02% sodium azide.
Storage Instructions	ZEB2 antibody can be stored at 4°C for three months and -20°C, stable for up to one year. Avoid repeated freeze-thaw cycles. Antibodies should not be exposed to prolonged high temperatures.
Host	Rabbit
Uniprot ID	O60315

Technical Details

Immunogen	ZEB2 antibody was raised against an 18 amino acid synthetic peptide near the carboxy terminus of human ZEB2. The immunogen is located within the last 50 amino acids of ZEB2.
Predicted Reactive Species	Mouse, Rat
Cross Reactivity	ZEB2 antibody is predicted to not cross-react with ZEB1.
Isotype	IgG
Form	Liquid
Concentration	1 mg/mL

Purification	ZEB2 Antibody is affinity chromatography purified via peptide column.
Suggested Dilutions	ZEB2 antibody can be used for detection of ZEB2 by Western blot at 1 - 2 ug/mL. Antibody can also be used for immunocytochemistry starting at 20 ug/mL. For immunofluorescence start at 20 ug/mL. Antibody validated: Western Blot in mouse samples; Immunocytochemistry in human samples and Immunofluorescence in human samples. All other applications and species not yet tested. Optimal dilutions for each application should be determined by the researcher.

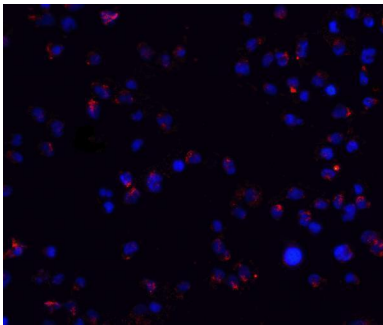
Anti-ZEB2 Antibody (A01169) Images



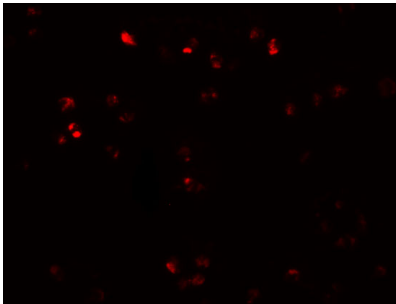
Western blot analysis of ZEB2 in EL4 cell lysate with ZEB2 antibody at 1 ug/mL in (A) the absence and (B) the presence of blocking peptide.



Immunocytochemistry of ZEB2 in Jurkat cells with ZEB2 antibody at 20 ug/mL.



Immunofluorescence of ZEB2 in Jurkat cells with ZEB2 antibody at 20 ug/ml. Red: ZEB2 Antibody (A01169) Blue: DAPI staining



Immunofluorescence of ZEB2 in Jurkat cells with ZEB2 antibody at 20 ug/mL.

Submit a product review to [Biocompare.com](https://www.biocompare.com)

Submit a review of this product to [Biocompare.com](https://www.biocompare.com) to receive a \$20 Amazon.com giftcard! Your reviews help your fellow scientists make the right decisions. Thank you for your contribution.



Anti-ZEB2 Antibody

For Research Use Only. Not for use in diagnostic procedures.