

## Anti-PKM2 Antibody

Catalog Number: A01173-1

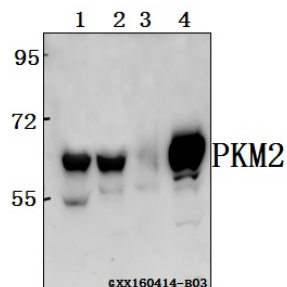
### Overview

Product Name	Anti-PKM2 Antibody
Reactive Species	Human, Mouse, Rat
Description	Boster Bio Anti-PKM2 Antibody catalog # A01173-1. Tested in WB,IHC,IF,IP,RIP applications. This antibody reacts with Human,Mouse,Rat.
Application	IP, IF, IHC, WB, RIP
Clonality	Polyclonal
Formulation	Rabbit IgG, 1mg/ml in PBS with 0.02% sodium azide, 50% glycerol, pH7.2
Storage Instructions	Store at -20°C for one year. For short term storage and frequent use, store at 4°C for up to one month. Avoid repeated freeze-thaw cycles.
Host	Rabbit
Uniprot ID	P14618

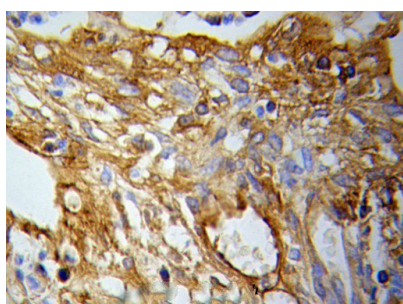
### Technical Details

Immunogen	Recombinant full length Human PKM2.
Cross Reactivity	No cross reactivity with other proteins.
Isotype	IgG
Form	Liquid
Concentration	1 mg/ml
Purification	The antibody was affinity-purified from rabbit antiserum by affinity-chromatography using epitope-specific immunogen and the purity is > 95% (by SDS-PAGE).
Suggested Dilutions	WB: 1:500-1:2000 IHC/IF: 1:50-1:200 IP/RIP: 1:50-1:200

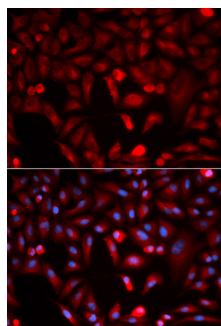
## Anti-PKM2 Antibody (A01173-1) Images



Western blot (WB) analysis of PKM2 polyclonal antibody at 1:500 dilution Lane1:C6 whole cell lysate(40ug) Lane2:HEK293T whole cell lysate(40ug) Lane3:The stomach tissue lysate of Mouse(40ug) Lane4:MCF-7 whole cell lysate(20ug)



Immunohistochemistry (IHC) analysis of PKM2 pAb in paraffin-embedded Lung cancer tissue.



Immunofluorescence analysis of HeLa cells, using PKM2 polyclonal antibody

## Submit a product review to Biocompare.com

Submit a review of this product to Biocompare.com to receive a \$20 Amazon.com giftcard! Your reviews help your fellow scientists make the right decisions. Thank you for your contribution.



Anti-PKM2 Antibody

For Research Use Only. Not for use in diagnostic procedures.