

## Anti-SERCA2 ATP2A2 Antibody

Catalog Number: A01176

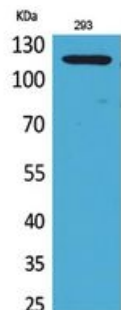
### Overview

Product Name	Anti-SERCA2 ATP2A2 Antibody
Reactive Species	Chicken, Human, Mouse, Rat
Description	Boster Bio Anti-SERCA2 ATP2A2 Antibody catalog # A01176. Tested in WB, IHC, IF, ELISA applications. This antibody reacts with Human, Mouse, Rat, Chicken.
Application	ELISA, IF, IHC, WB
Clonality	Polyclonal
Formulation	Liquid in PBS containing 50% glycerol, 0.5% stabilizing protein and 0.02% sodium azide. *This antibody is supplied in a stabilized formulation. Compatibility with conjugation reactions depends on the chemistry of the conjugation method used. For conjugation methods that are not compatible with the stabilizing components present in this formulation, a carrier-free antibody format is required.
Storage Instructions	Store at -20°C for one year. For short term storage and frequent use, store at 4°C for up to one month. Avoid repeated freeze-thaw cycles.
Host	Rabbit
Uniprot ID	P16615

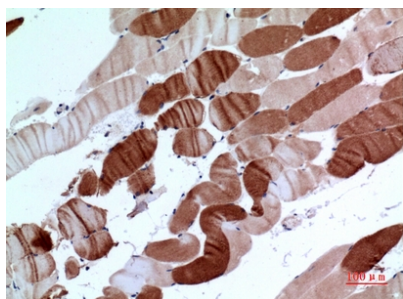
### Technical Details

Immunogen	The antiserum was produced against synthesized peptide derived from the C-terminal region of human ATP2A2. AA range:841-890
Isotype	IgG
Form	Liquid
Concentration	1 mg/ml
Purification	Immunogen affinity purified
Suggested Dilutions	WB 1:500-1:2000 IHC: 1:100-1:300 ELISA 1:20000 IF 1:50-200

## Anti-SERCA2 ATP2A2 Antibody (A01176) Images



Western Blot (WB) analysis of 293 cells using SERCA2 Polyclonal antibody.



Immunohistochemistry (IHC) analysis of paraffin-embedded Human Muscle, antibody was diluted at 1:100.

### 1 Publications Citing This Product

1. PubMed ID: 24324360, Guo Y, Zeng Qc, Zhang Cq, Zhang Xz, Li Rx, Wu Jm, Guan J, Liu L, Zhang Xc, Li Jy, Wan Zm. Int J Med Sci. 2013 Nov 5;10(13):1837-45. Doi: 10.7150/Ijms.6786. Ecollection 2013. Extracellular Matrix Of Mechanically Stretched Cardiac Fibroblasts Improv...

Visit [bosterbio.com/anti-serca2-antibody-a01176-boster.html](http://bosterbio.com/anti-serca2-antibody-a01176-boster.html) to see all 1 publications.

### Submit a product review to Biocompare.com

Submit a review of this product to Biocompare.com to receive a \$20 Amazon.com giftcard! Your reviews help your fellow scientists make the right decisions. Thank you for your contribution.



Anti-SERCA2 ATP2A2 Antibody

For Research Use Only. Not for use in diagnostic procedures.