

Anti-CRM1 XPO1 Antibody

Catalog Number: A01180

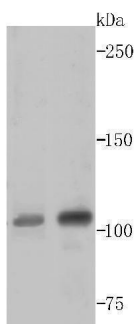
Overview

Product Name	Anti-CRM1 XPO1 Antibody
Reactive Species	Human, Mouse, Rat
Description	Boster Bio Anti-CRM1 XPO1 Antibody catalog # A01180. Tested in WB,ICC,IF,IHC,Flow Cytometry applications. This antibody reacts with Human,Mouse,Rat.
Application	Flow Cytometry, IF, IHC, ICC, WB
Clonality	Polyclonal
Formulation	Rabbit IgG, 1mg/ml in PBS with 0.02% sodium azide, 50% glycerol, pH7.2
Storage Instructions	Store at -20°C for one year. For short term storage and frequent use, store at 4°C for up to one month. Avoid repeated freeze-thaw cycles.
Host	Rabbit
Uniprot ID	O14980

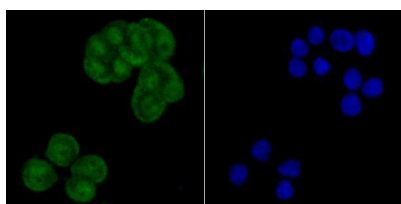
Technical Details

Immunogen	Recombinant protein within C terminal human CRM1.
Cross Reactivity	No cross reactivity with other proteins.
Isotype	IgG
Form	Liquid
Concentration	1 mg/ml
Purification	ProA affinity purified
Suggested Dilutions	WB: 1:500 ICC: 1:50-1:200 IHC: 1:50-1:100 FC: 1:50-1:100

Anti-CRM1 XPO1 Antibody (A01180) Images



Western blot analysis of CRM1 on 293T and Hela cell lysates using anti-CRM1 antibody at 1/500 dilution.



ICC staining CRM1 in LOVO cells (green). The nuclear counter stain is DAPI (blue). Cells were fixed in paraformaldehyde, permeabilised with 0.25% Triton X100/PBS.

Submit a product review to [Biocompare.com](https://www.biocompare.com)

Submit a review of this product to [Biocompare.com](https://www.biocompare.com) to receive a \$20 Amazon.com giftcard! Your reviews help your fellow scientists make the right decisions. Thank you for your contribution.



Anti-CRM1 XPO1 Antibody

For Research Use Only. Not for use in diagnostic procedures.