

## Anti-CD1C/Bdca 1 Antibody

Catalog Number: A01188

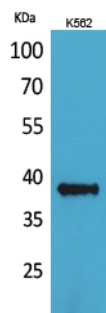
### Overview

Product Name	Anti-CD1C/Bdca 1 Antibody
Reactive Species	Human
Description	Boster Bio Anti-CD1C/Bdca 1 Antibody catalog # A01188. Tested in WB, ELISA applications. This antibody reacts with Human.
Application	ELISA, WB
Clonality	Polyclonal
Formulation	Liquid in PBS containing 50% glycerol, 0.5% stabilizing protein and 0.02% sodium azide. *This antibody is supplied in a stabilized formulation. Compatibility with conjugation reactions depends on the chemistry of the conjugation method used. For conjugation methods that are not compatible with the stabilizing components present in this formulation, a carrier-free antibody format is required.
Storage Instructions	Store at -20°C for one year. For short term storage and frequent use, store at 4°C for up to one month. Avoid repeated freeze-thaw cycles.
Host	Rabbit
Uniprot ID	P29017

### Technical Details

Immunogen	The antiserum was produced against synthesized peptide derived from the Internal region of human CD1C. AA range:211-260
Isotype	IgG
Form	Liquid
Concentration	1 mg/ml
Purification	Immunogen affinity purified
Suggested Dilutions	WB 1:500-1:2000 ELISA 1:20000

## Anti-CD1C/Bdca 1 Antibody (A01188) Images



Western Blot (WB) analysis of K562 cells using CD1C Polyclonal antibody.

### Submit a product review to Biocompare.com

Submit a review of this product to Biocompare.com to receive a \$20 Amazon.com giftcard! Your reviews help your fellow scientists make the right decisions. Thank you for your contribution.



Anti-CD1C/Bdca 1 Antibody

For Research Use Only. Not for use in diagnostic procedures.