

## Anti-CDC7 Kinase Antibody

Catalog Number: A01190-2

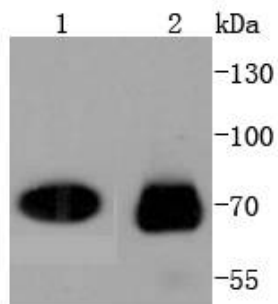
### Overview

|                      |   |
|----------------------|---|
| Product Name         | Anti-CDC7 Kinase Antibody   |
| Reactive Species     | Human, Mouse, Rat   |
| Description          | Boster Bio Anti-CDC7 Kinase Antibody catalog # A01190-2. Tested in WB,Flow Cytometry applications. This antibody reacts with Human,Mouse,Rat. |
| Application          | Flow Cytometry, WB  |
| Clonality            | Polyclonal  |
| Formulation          | Rabbit IgG, 1mg/ml in PBS with 0.02% sodium azide, 50% glycerol, pH7.2  |
| Storage Instructions | Store at -20°C for one year. For short term storage and frequent use, store at 4°C for up to one month. Avoid repeated freeze-thaw cycles.    |
| Host                 | Rabbit  |
| Uniprot ID           | O00311  |

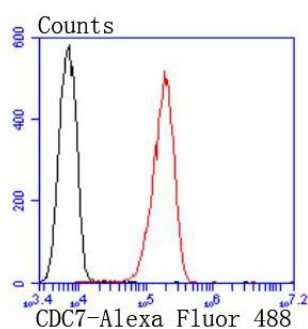
### Technical Details

|                     |  |
|---------------------|--|
| Immunogen           | recombinant protein                      |
| Cross Reactivity    | No cross reactivity with other proteins. |
| Isotype             | IgG                                      |
| Form                | Liquid                                   |
| Concentration       | 1 mg/ml                                  |
| Purification        | ProA affinity purified                   |
| Suggested Dilutions | WB: 1:1,000-1:5,000<br>FC: 1:50-1:100    |

## Anti-CDC7 Kinase Antibody (A01190-2) Images



Western blot analysis of CDC7 Kinase on different lysates using anti-CDC7 antibody at 1/1,000 dilution. Positive control: Lane 1: Jurkat Lane 2: HeLa



Flow cytometric analysis of A431 cells with CDC7 Kinase antibody at 1/50 dilution (red) compared with an unlabelled control (cells without incubation with primary antibody; black). Alexa Fluor 488-conjugated goat anti rabbit IgG was used as the secondary antibody.

### Submit a product review to Biocompare.com

Submit a review of this product to Biocompare.com to receive a \$20 Amazon.com giftcard! Your reviews help your fellow scientists make the right decisions. Thank you for your contribution.



Anti-CDC7 Kinase Antibody

For Research Use Only. Not for use in diagnostic procedures.