

Anti-MAPKAPK-2 (phospho-S272) Antibody

Catalog Number: A01193S272

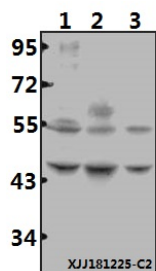
Overview

Product Name	Anti-MAPKAPK-2 (phospho-S272) Antibody
Reactive Species	Human, Mouse, Rat
Description	Boster Bio Anti-MAPKAPK-2 (phospho-S272) Antibody catalog # A01193S272. Tested in WB applications. This antibody reacts with Human,Rat,Mouse.
Application	WB
Clonality	Polyclonal
Formulation	Rabbit IgG, 1mg/ml in PBS with 0.02% sodium azide, 50% glycerol, pH7.2
Storage Instructions	Store at -20°C for one year. For short term storage and frequent use, store at 4°C for up to one month. Avoid repeated freeze-thaw cycles.
Host	Rabbit
Uniprot ID	P49137

Technical Details

Immunogen	Synthetic phosphopeptide derived from human MAPKAPK-2 around the phosphorylation site of Serine 272
Cross Reactivity	No cross reactivity with other proteins.
Isotype	IgG
Form	Liquid
Concentration	1 mg/ml
Purification	The antibody was affinity-purified from rabbit antiserum by affinity-chromatography using epitope-specific immunogen and the purity is > 95% (by SDS-PAGE).
Suggested Dilutions	WB: 1:500-1:1000

Anti-MAPKAPK-2 (phospho-S272) Antibody (A01193S272) Images



Western blot (WB) analysis of MAPKAPK-2 (phospho-S272) polyclonal antibody at 1:500 dilution Lane1:Hela whole cell lysate(40ug) Lane2:The Spleen tissue lysate of Mouse(40ug) Lane3:The Spleen tissue lysate of Rat(40ug)

Submit a product review to Biocompare.com

Submit a review of this product to Biocompare.com to receive a \$20 Amazon.com giftcard! Your reviews help your fellow scientists make the right decisions. Thank you for your contribution.



Anti-MAPKAPK-2 (phospho-S272) Antibody

For Research Use Only. Not for use in diagnostic procedures.