

Anti-Phospho-MAPKAPK-2 (S272) Antibody

Catalog Number: A01193S272-1

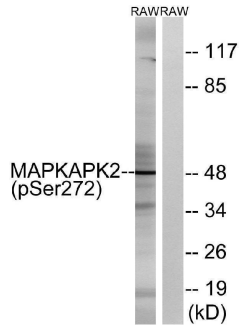
Overview

| | |
|----------------------|--|
| Product Name | Anti-Phospho-MAPKAPK-2 (S272) Antibody |
| Reactive Species | Human, Mouse, Rat |
| Description | Boster Bio Anti-Phospho-MAPKAPK-2 (S272) Antibody catalog # A01193S272-1. Tested in WB, IHC, IF, ELISA applications. This antibody reacts with Human, Mouse, Rat. |
| Application | ELISA, IF, IHC, WB |
| Clonality | Polyclonal |
| Formulation | Liquid in PBS containing 50% glycerol, 0.5% stabilizing protein and 0.02% sodium azide. *This antibody is supplied in a stabilized formulation. Compatibility with conjugation reactions depends on the chemistry of the conjugation method used. For conjugation methods that are not compatible with the stabilizing components present in this formulation, a carrier-free antibody format is required. |
| Storage Instructions | Store at -20°C for one year. For short term storage and frequent use, store at 4°C for up to one month. Avoid repeated freeze-thaw cycles. |
| Host | Rabbit |
| Uniprot ID | P49137 |

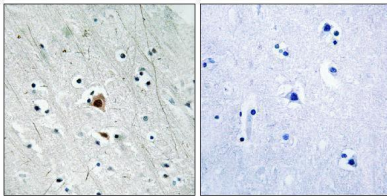
Technical Details

| | |
|---------------------|--|
| Immunogen | The antiserum was produced against synthesized peptide derived from human MAPKAPK2 around the phosphorylation site of Ser272. AA range:238-287 |
| Cross Reactivity | No cross reactivity with other proteins. |
| Isotype | IgG |
| Form | Liquid |
| Concentration | 1 mg/ml |
| Purification | The antibody was affinity-purified from rabbit antiserum by affinity-chromatography using epitope-specific immunogen. |
| Suggested Dilutions | WB 1:500-1:2000 IHC 1:100-1:300 ELISA 1:5000 IF 1:50-200 |

Anti-Phospho-MAPKAPK-2 (S272) Antibody (A01193S272-1) Images



Western blot analysis of lysates from RAW264.7 cells treated with UV 15', using MAPKAPK2 (Phospho-Ser272) Antibody. The lane on the right is blocked with the phospho peptide.



Immunohistochemistry analysis of paraffin-embedded human brain, using MAPKAPK2 (Phospho-Ser272) Antibody. The picture on the right is blocked with the phospho peptide.

Submit a product review to [Biocompare.com](https://www.biocompare.com)

Submit a review of this product to [Biocompare.com](https://www.biocompare.com) to receive a \$20 Amazon.com giftcard! Your reviews help your fellow scientists make the right decisions. Thank you for your contribution.



Anti-Phospho-MAPKAPK-2 (S272) Antibody

For Research Use Only. Not for use in diagnostic procedures.