

## Anti-MAP-2 (W14) Antibody

Catalog Number: A01201-3

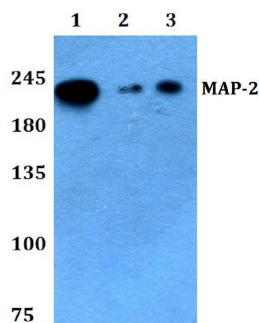
### Overview

Product Name	Anti-MAP-2 (W14) Antibody
Reactive Species	Human, Mouse, Rat
Description	Boster Bio Anti-MAP-2 (W14) Antibody catalog # A01201-3. Tested in WB,IHC,IF applications. This antibody reacts with Human,Mouse,Rat.
Application	IF, IHC, WB
Clonality	Polyclonal
Formulation	Rabbit IgG, 1mg/ml in PBS with 0.02% sodium azide, 50% glycerol, pH7.2
Storage Instructions	Store at -20°C for one year. For short term storage and frequent use, store at 4°C for up to one month. Avoid repeated freeze-thaw cycles.
Host	Rabbit
Uniprot ID	P11137

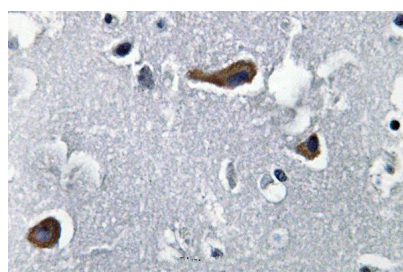
### Technical Details

Immunogen	Synthetic peptide, corresponding to the N-terminus of Human MAP-2.
Cross Reactivity	No cross reactivity with other proteins.
Isotype	IgG
Form	Liquid
Concentration	1 mg/ml
Purification	The antibody was affinity-purified from rabbit antiserum by affinity-chromatography using epitope-specific immunogen and the purity is > 95% (by SDS-PAGE).
Suggested Dilutions	WB: 1:500-1:1000 IHC: 1:50-1:200 IF: 1:50-1:200

## Anti-MAP-2 (W14) Antibody (A01201-3) Images



Western blot (WB) analysis of MAP-2 (W14) polyclonal antibody at 1:500 dilution Lane1:HEK293T whole cell lysate Lane2:Raw264.7 whole cell lysate Lane3:PC12 whole cell lysate



Immunohistochemistry (IHC) analyzes of MAP-2 (W14) pAb in paraffin-embedded human brain tissue.

## 1 Publications Citing This Product

1. PubMed ID: 31996007, Yu Q,Li X,Li Y,Fu J,Xiao Z.Effects of combined electroacupuncture and exercise training on motor function and microtubule-associated protein 2 expression in the middle and late stages of cerebral infarction in rats.Acupunct Med.2020 Jun;38(3):175-180.doi:

Visit [bosterbio.com/anti-map-2-w14-antibody-a01201-3-boster.html](https://bosterbio.com/anti-map-2-w14-antibody-a01201-3-boster.html) to see all 1 publications.

## Submit a product review to Biocompare.com

Submit a review of this product to Biocompare.com to receive a \$20 Amazon.com giftcard! Your reviews help your fellow scientists make the right decisions. Thank you for your contribution.



Anti-MAP-2 (W14) Antibody

For Research Use Only. Not for use in diagnostic procedures.