

Anti-Vinculin VCL Antibody (biotin)

Catalog Number: A01207-Biotin

About VCL

Vinculin is a cytoskeletal protein that plays an important role in the regulation of focal adhesions and embryonic development (1). Three structural vinculin domains include an amino-terminal head, a short flexible proline-rich region and a carboxy-terminal tail (2). Expression of vinculin were shown to be affected by the level of actin expression (2,3). Vinculin deficiencies are associated with a decrease in cell adhesion and an increase in cell motility, suggesting a possible role in metastatic growth (4). Defects in VCL are the cause of cardiomyopathy dilated type 1W (CMD1W) (5).

Overview

Product Name	Anti-Vinculin VCL Antibody (biotin)
Reactive Species	Chicken, Human, Mouse, Rabbit, Rat
Description	Boster Bio Anti-Vinculin VCL Antibody (biotin) (Catalog # A01207-Biotin). Tested in ELISA, WB applications. This antibody reacts with Human, Mouse, Rat, Rabbit, Chicken.
Application	ELISA, WB
Clonality	Polyclonal Clone: SK7
Formulation	Biotin-Vinculin Antibody is supplied in PBS containing 1% BSA and 0.02% sodium azide.
Storage Instructions	Biotin-Vinculin antibody can be stored at 4°C for three months and -20°C, stable for up to one year.
Host	Rabbit
Uniprot ID	P18206

Technical Details

Immunogen	Biotin-Vinculin antibody was raised against a 23 amino acid peptide near the amino terminus of human Vinculin.
Predicted Reactive Species	Boar, Bovine, Cat, Mouse, Rat
Cross Reactivity	Biotin-Vinculin antibody is human, mouse, rat, rabbit and chicken reactive. At least three isoforms of Vinculin are known to exist.
Isotype	IgG
Form	Liquid
Concentration	1 mg/mL
Purification	Biotin-Vinculin antibody is affinity chromatography purified via peptide column.
Suggested Dilutions	Dilute the sample so that the expected range of concentrations fall within the detection range of this

kit.

If the expected range of concentration is unknown, a pilot test should be conducted to decide the optimal dilution ratio for your samples.

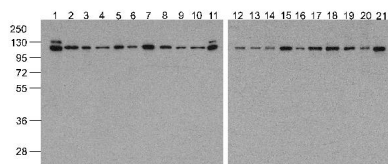
Some PubMed article(s) citing the expression level of this target are as follows:

Boster Bio's internal QC testing used:

Vinculin antibody can be used for detection of Vinculin by Western blot at 0.5 - 1 ug/ml.

Antibody validated: Western Blot in human, mouse, and rat samples. All other applications and species not yet tested. Optimal dilutions for each application should be determined by the researcher.

Anti-Vinculin VCL Antibody (biotin) (A01207-Biotin) Images



Western blot analysis of Vinculin in 293

Submit a product review to Biocompare.com

Submit a review of this product to Biocompare.com to receive a \$20 Amazon.com giftcard! Your reviews help your fellow scientists make the right decisions. Thank you for your contribution.



Anti-Vinculin VCL Antibody (biotin)