

Anti-ABCG1 Antibody (Center)

Catalog Number: A01227-1

About ABCG1

ABCG1 is a member of the superfamily of ATP-binding cassette (ABC) transporters. ABC proteins transport various molecules across extra- and intra-cellular membranes. ABC genes are divided into seven distinct subfamilies (ABC1, MDR/TAP, MRP, ALD, OABP, GCN20, White). This protein is a member of the White subfamily. It is involved in macrophage cholesterol and phospholipids transport, and may regulate cellular lipid homeostasis in other cell types.

Overview

Product Name	Anti-ABCG1 Antibody (Center)
Reactive Species	Human
Description	Boster Bio Anti-ABCG1 Antibody (Center) (Catalog # A01227-1). Tested in Flow Cytometry, IHC-P, WB application(s). This antibody reacts with Human.
Application	Flow Cytometry, IHC-P, WB
Clonality	Polyclonal
Formulation	Purified polyclonal antibody supplied in PBS with 0.09% (W/V) sodium azide.
Storage Instructions	Maintain refrigerated at 2-8°C for up to 2 weeks. For long-term storage, store at -20°C in small aliquots to prevent freeze-thaw cycles.
Host	Rabbit
Uniprot ID	P45844

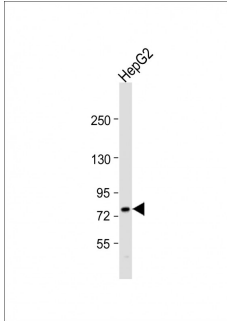
Technical Details

Immunogen	This ABCG1 antibody is generated from rabbits immunized with a KLH conjugated synthetic peptide between 359-387 amino acids from the Central region of human ABCG1.
Predicted Reactive Species	Bovine, Xenopus
Recommended Detection Systems	Boster recommends Enhanced Chemiluminescent Kit with anti-Rabbit IgG (EK1002) for Western blot, and HRP Conjugated anti-Rabbit IgG Super Vision Assay Kit (SV0002-1) for IHC(P).
Cross Reactivity	No cross reactivity with other proteins.
Isotype	Rabbit IgG
Form	Liquid
Purification	This antibody is prepared by Saturated Ammonium Sulfate (SAS) precipitation followed by dialysis against PBS.

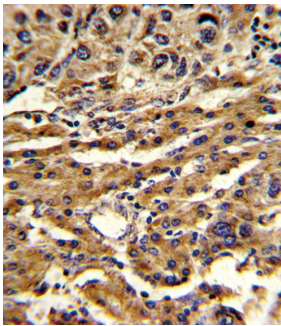
Suggested Dilutions

WB: 1:1000
IHC-P: 1:10-1:50
FC: 1:10-1:50

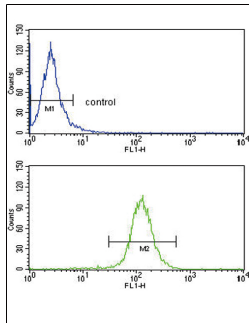
Anti-ABCG1 Antibody (Center) (A01227-1) Images



Anti-ABCG1 Antibody (Center) at 1:1000 dilution + HepG2 whole cell lysates/proteins at 20 µg per lane. Secondary Goat Anti-Rabbit IgG, (H+L), Peroxidase conjugated at 1/10000 dilution. Predicted band size : 76 kDa Blocking/Dilution buffer: 5% NFDN/TBST.



Formalin-fixed and paraffin-embedded human hepatocarcinoma reacted with ABCG1 Antibody (Center), which was peroxidase-conjugated to the secondary antibody, followed by DAB staining. This data demonstrates the use of this antibody for immunohistochemistry; clinical relevance has not been evaluated.



ABCG1 Antibody (Center) flow cytometry analysis of HepG2 cells (bottom histogram) compared to a negative control cell (top histogram). FITC-conjugated goat-anti-rabbit secondary antibodies were used for the analysis.

Submit a product review to [Biocompare.com](https://www.biocompare.com)

Submit a review of this product to [Biocompare.com](https://www.biocompare.com) to receive a \$20 Amazon.com giftcard! Your reviews help your fellow scientists make the right decisions. Thank you for your contribution.



Anti-ABCG1 Antibody (Center)

For Research Use Only. Not for use in diagnostic procedures.