

Anti-NFkB-p100 (phospho-S865) NFKB2 Antibody

Catalog Number: A01228S865-1

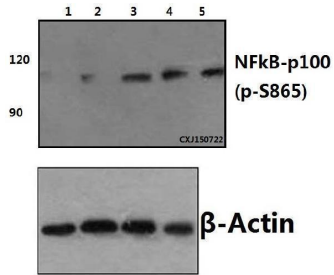
Overview

Product Name	Anti-NFkB-p100 (phospho-S865) NFKB2 Antibody
Reactive Species	Human, Mouse, Rat
Description	Boster Bio Anti-NFkB-p100 (phospho-S865) NFKB2 Antibody catalog # A01228S865-1. Tested in WB,IHC applications. This antibody reacts with Human,Mouse,Rat.
Application	IHC, WB
Clonality	Polyclonal
Formulation	Rabbit IgG, 1mg/ml in PBS with 0.02% sodium azide, 50% glycerol, pH7.2
Storage Instructions	Store at -20°C for one year. For short term storage and frequent use, store at 4°C for up to one month. Avoid repeated freeze-thaw cycles.
Host	Rabbit
Uniprot ID	Q00653

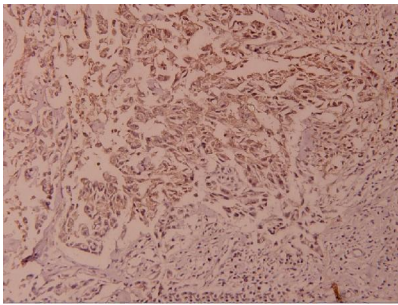
Technical Details

Immunogen	Synthetic phosphopeptide derived from human NFkB-p100 around the phosphorylation site of Serine 865.
Cross Reactivity	No cross reactivity with other proteins.
Isotype	IgG
Form	Liquid
Concentration	1 mg/ml
Purification	The antibody was affinity-purified from rabbit antiserum by affinity-chromatography using epitope-specific immunogen and the purity is > 95% (by SDS-PAGE).
Suggested Dilutions	WB: 1:500-1:1000 IHC: 1:50-1:200

Anti-NFkB-p100 (phospho-S865) NFKB2 Antibody (A01228S865-1) Images



Western blot (WB) analysis of NFkB-p100 (phospho-S865) polyclonal antibody at 1:500 dilution Lane1:NIH-3T3 whole cell lysate(40ug) Lane2:NIH-3T3(PMA, 60ng/ml, 5min)whole cell lysate(40ug) Lane3:NIH-3T3(PMA, 60ng/ml, 15min)whole cell lysate(40ug) Lane4:NIH-3T3(PMA, 60ng/ml, 30min)whole cell lysate(40ug) Lane5:NIH-3T3(EGF, 0.1ng/ml, 30min)whole cell lysate(40ug)



Immunohistochemistry (IHC) analyzes of p-NFkB-p100 (S865) pAb in paraffin-embedded human breast carcinoma tissue at 1:100.

Submit a product review to Biocompare.com

Submit a review of this product to Biocompare.com to receive a \$20 Amazon.com giftcard! Your reviews help your fellow scientists make the right decisions. Thank you for your contribution.



Anti-NFkB-p100 (phospho-S865) NFKB2 Antibody

For Research Use Only. Not for use in diagnostic procedures.