

Anti-LPP Monoclonal Antibody

Catalog Number: A01240

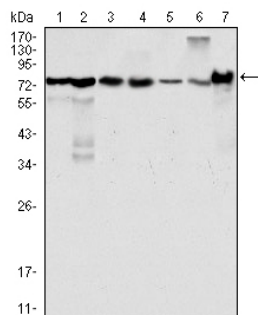
Overview

Product Name	Anti-LPP Monoclonal Antibody
Reactive Species	Hamster, Human, Monkey, Mouse
Description	Boster Bio Anti-LPP Monoclonal Antibody catalog # A01240. Tested in WB, IHC, IF, ELISA applications. This antibody reacts with Human, Mouse, Monkey, Hamster.
Application	ELISA, IF, IHC, WB
Clonality	Monoclonal 8B3A11
Formulation	Ascitic fluid containing 0.03% sodium azide.
Storage Instructions	Store at -20°C for one year. For short term storage and frequent use, store at 4°C for up to one month. Avoid repeated freeze-thaw cycles.
Host	Mouse
Uniprot ID	Q93052

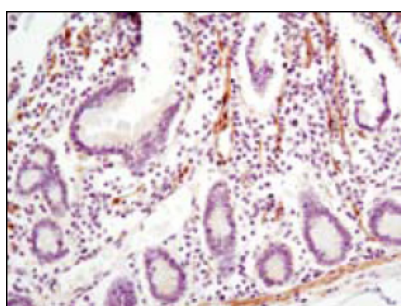
Technical Details

Immunogen	Purified recombinant fragment of human LPP expressed in E. Coli.
Cross Reactivity	No cross reactivity with other proteins.
Isotype	IgG
Form	Liquid
Concentration	1 mg/ml
Purification	Ascitic fluid
Suggested Dilutions	WB 1:500-1:2000 IHC 1:200-1:1000 IF 1:200-1:1000 ELISA 1:10000

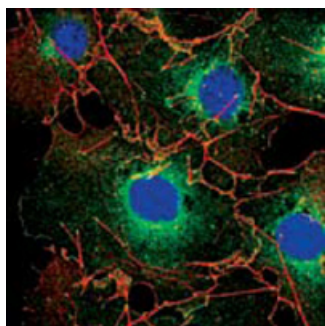
Anti-LPP Monoclonal Antibody (A01240) Images



Western Blot analysis using LPP Monoclonal Antibody against HeLa (1), NIH/3T3 (2), COS (3), Caki (4), MCF-7 (5), HepG2 (6) and SMMC-7721 (7) cell lysate.



Immunohistochemistry analysis of paraffin-embedded human small intestine with DAB staining using LPP Monoclonal Antibody.



Confocal immunofluorescence analysis of COS cells using LPP Monoclonal Antibody (green). Red: Actin filaments have been labeled using DY-554 phalloidin. Blue: DRAQ5 fluorescent DNA dye.

Submit a product review to [Biocompare.com](https://www.biocompare.com)

Submit a review of this product to [Biocompare.com](https://www.biocompare.com) to receive a \$20 Amazon.com giftcard! Your reviews help your fellow scientists make the right decisions. Thank you for your contribution.



Anti-LPP Monoclonal Antibody

For Research Use Only. Not for use in diagnostic procedures.