

Anti-Albumin Antibody

Catalog Number: A01245

About ALB

Albumin is a soluble, monomeric protein which comprises about one-half of the blood serum protein. It functions primarily as a carrier protein for steroids, fatty acids, and thyroid hormones and plays a role in stabilizing extracellular fluid volume. Albumin is synthesized in the liver as preproalbumin which has an N-terminal peptide that is removed before the nascent protein is released from the rough endoplasmic reticulum. The resulting product, proalbumin, is in turn cleaved in the Golgi vesicles to produce the secreted albumin. At least two isoforms of Albumin are known to exist.

Overview

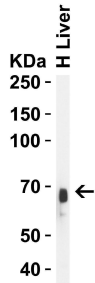
Product Name	Anti-Albumin Antibody
Reactive Species	Human, Mouse, Rat
Description	Boster Bio Anti-Albumin Antibody (Catalog # A01245). Tested in ELISA, WB, IHC-P, IF applications. This antibody reacts with Human, Mouse, Rat.
Application	ELISA, IF, IHC-P, WB
Clonality	Polyclonal
Formulation	Albumin Antibody is supplied in PBS containing 0.02% sodium azide.
Storage Instructions	Albumin antibody can be stored at 4°C up to one year. Antibodies should not be exposed to prolonged high temperatures.
Host	Chicken
Uniprot ID	P02768

Technical Details

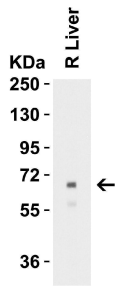
Immunogen	Albumin antibody was raised against a 13 amino acid synthetic peptide near the center of human Albumin. The immunogen is located within amino acids 340 - 390 of Albumin.
Predicted Reactive Species	Chicken, Donkey, Horse, Pig, Rabbit
Isotype	IgY
Form	Liquid
Concentration	1 mg/mL
Purification	Albumin Antibody is affinity chromatography purified via peptide column.
Suggested Dilutions	WB: 1-2 ug/mL; IHC-P/IF: 10-20 ug/mL; IHC-P: 2-10 ug/mL. Antibody validated: Western Blot in human, mouse and rat samples; Immunofluorescence in mouse

samples; Immunohistochemistry in human, mouse, and rat samples; . All other applications and species not yet tested.

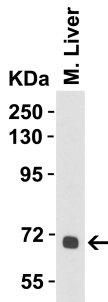
Anti-Albumin Antibody (A01245) Images



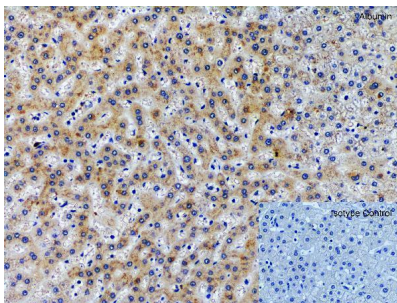
Western Blot Validation in Human Liver Loading: 10 ug of lysates per lane. Antibodies: Albumin, A01245, 1 ug/mL, 1h incubation at RT in 5% NFDm/TBST. Secondary: Goat anti-chicken IgY HRP conjugate at 1:10000 dilution.



Western Blot Validation in Rat Liver Loading: 10 ug of lysates per lane. Antibodies: Albumin, A01245, 1 ug/mL, 1h incubation at RT in 5% NFDm/TBST. Secondary: Goat anti-chicken IgY HRP conjugate at 1:10000 dilution.

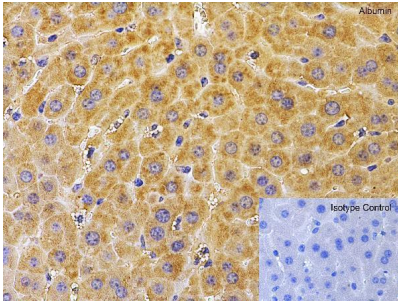


Western Blot Validation in Mouse Liver Loading: 10 ug of lysates per lane. Antibodies: Albumin, A01245, 1 ug/mL, 1h incubation at RT in 5% NFDm/TBST. Secondary: Goat anti-chicken IgY HRP conjugate at 1:10000 dilution.

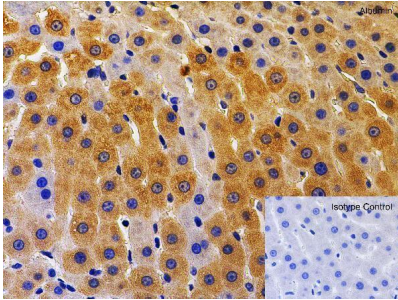


Immunohistochemistry Validation of Albumin in Human Liver
Immunohistochemical analysis of paraffin-embedded human liver tissue using anti-albumin antibody (A01245) at 2 ug/ml. Tissue was fixed with formaldehyde and blocked with 10% serum for 1 h at RT; antigen retrieval was by heat mediation with a citrate buffer (pH6). Samples were incubated with primary antibody overnight at 4 °C. A goat anti- chicken IgY (HRP) at 1/250 was used as secondary. Counter stained with Hematoxylin.

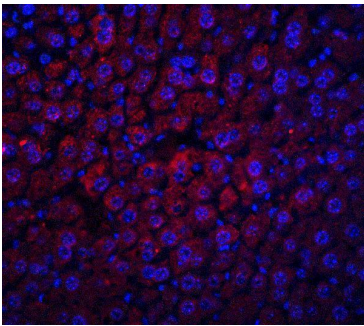
Immunohistochemistry Validation of Albumin in Mouse Liver
Immunohistochemical analysis of paraffin-embedded mouse liver tissue using anti-albumin antibody (A01245) at 10 ug/ml. Tissue was fixed with formaldehyde and blocked with 10% serum for 1 h at RT; antigen retrieval was by heat mediation with a citrate buffer (pH6). Samples were incubated with primary antibody overnight at 4 °C. A goat anti- chicken IgY (HRP) at 1/250 was used as secondary.



Counter stained with Hematoxylin.



Immunohistochemistry Validation of Albumin in Rat Liver
Immunohistochemical analysis of paraffin-embedded rat liver tissue using anti-albumin antibody (A01245) at 2 ug/ml. Tissue was fixed with formaldehyde and blocked with 10% serum for 1 h at RT; antigen retrieval was by heat mediation with a citrate buffer (pH6). Samples were incubated with primary antibody overnight at 4 °C. A goat anti-chicken IgY (HRP) at 1/250 was used as secondary. Counter stained with Hematoxylin.



Immunofluorescence Validation of Albumin in Mouse Liver
Immunofluorescent analysis of 4% paraformaldehyde-fixed mouse liver tissue labeling albumin with A01245 at 20 µg/mL, followed by goat anti-chicken IgY secondary antibody at 1/500 dilution (red) and DAPI staining (blue).

Submit a product review to [Biocompare.com](https://www.biocompare.com)

Submit a review of this product to [Biocompare.com](https://www.biocompare.com) to receive a \$20 Amazon.com giftcard! Your reviews help your fellow scientists make the right decisions. Thank you for your contribution.



Anti-Albumin Antibody

For Research Use Only. Not for use in diagnostic procedures.