

Anti-Human Serum Albumin Antibody Fluorescein Conjugated

Catalog Number: A01245-2

About ALB

Anti-Human serum Fluorescein detects Human serum proteins. Serum proteins are those proteins remaining in portion of plasma after coagulation of blood, during which process the plasma protein fibrinogen is converted to fibrin and remains behind in the clot. Anti-Human serum is ideal for investigators involved in Cell Signaling, Cellular Biology and Signal Transduction research.

Overview

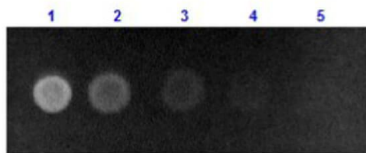
Product Name	Anti-Human Serum Albumin Antibody Fluorescein Conjugated
Reactive Species	Human
Description	Boster Bio Anti-Human Serum Albumin Antibody Fluorescein Conjugated (Catalog # A01245-2). Tested in Dot blot applications. This antibody reacts with Human.
Conjugate	FITC
Application	IF, WB, FLISA
Clonality	Polyclonal
Formulation	0.02 M Potassium Phosphate, 0.15 M Sodium Chloride, pH 7.2, 10 mg/ml Polyethylene Glycol (PEG-8000), 0.01% (w/v) Sodium Azide
Storage Instructions	Store vial at 4°C prior to restoration. For extended storage aliquot contents and freeze at -20°C or below. Avoid cycles of freezing and thawing. Centrifuge product if not completely clear after standing at room temperature. This product is stable for several weeks at 4°C as an undiluted liquid. Dilute only prior to immediate use. Expiration date is one (1) year from date of opening. (Ship at ambient temperature.)
Host	Rabbit
Uniprot ID	P02768

Technical Details

Immunogen	Human Serum Albumin
Predicted Reactive Species	Bovine, Goat, Guinea Pig, Hamster, Monkey, Sheep
Cross Reactivity	Detects ~20kDa. Does not cross-react with alphaB-crystallin, betaL-crystallin, ̢H- crystallin, gamma-crystallin, HSP25, HSP27 or HSP47 proteins.
Isotype	IgG
Form	Lyophilized

Concentration	1.0 mg/mL by UV absorbance at 280 nm
Purification	This product was prepared from monospecific antiserum by immunoaffinity chromatography using purified human serum albumin. Assay by immunoelectrophoresis resulted in a single precipitin arc against anti-fluorescein and anti-Rabbit Serum. Analysis by SDS-PAGE was used to determine that this preparation is substantially free of aggregates and shows a banding pattern consistent with purified Rabbit IgG.
Suggested Dilutions	Fluorochrome Protein Value: 3.7 IF Microscopy: User optimized WB: User optimized Anti-Human serum Fluorescein has been tested by dot blot and is designed for immunofluorescence microscopy, fluorescence based plate assays (FLISA) and fluorescent western blotting. This product is also suitable for multiplex analysis, including multicolor imaging, utilizing various commercial platforms.

Anti-Human Serum Albumin Antibody Fluorescein Conjugated (A01245-2) Images



Dot Blot results of Rabbit Anti-Human Serum Albumin Antibody Fluorescein Conjugate. Dots are Human Serum Albumin: (1) 100ng, (2) 33.3ng, (3) 11.1ng, (4) 3.70ng, (5) 1.23ng. Primary Antibody: none. Secondary Antibody: Rabbit Anti-Human Serum Albumin Antibody FITC at 1ug/mL in 1% Fish Gel 1hr RT. Imaged with BioRad ChemiDoc, Fluorescein filter.

34 Publications Citing This Product

1. PubMed ID: 27430252, Endothelial lipase is upregulated by interleukin-6 partly via the p38 MAPK and p65 NF- κ B signaling pathways
2. PubMed ID: 27746409, An immortalized steroidogenic goat granulosa cell line as a model system to study the effect of the endoplasmic reticulum (ER)-stress response on steroidogenesis
3. PubMed ID: 29552214, Cai CF, Liu LM, Shangguan HJ, Liu CS, Luo XY, Li YM. *Oncol Lett.* 2018 Apr;15(4):5849-5858. doi: 10.3892/ol.2018.8009. Epub 2018 Feb 9. Anti-oncogenic activity of Chibby in the development of human nasopharyngeal carcinoma

Visit bosterbio.com/anti-human-serum-albumin-antibody-fluorescein-conjugated-a01245-2-boster.html to see all 34 publications.

Submit a product review to Biocompare.com

Submit a review of this product to Biocompare.com to receive a \$20 Amazon.com giftcard! Your reviews help your fellow scientists make the right decisions. Thank you for your contribution.



Anti-Human Serum Albumin Antibody Fluorescein Conjugated

For Research Use Only. Not for use in diagnostic procedures.